

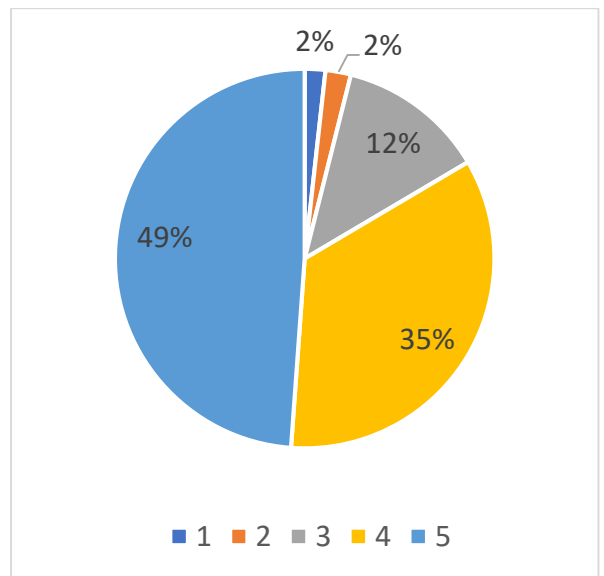
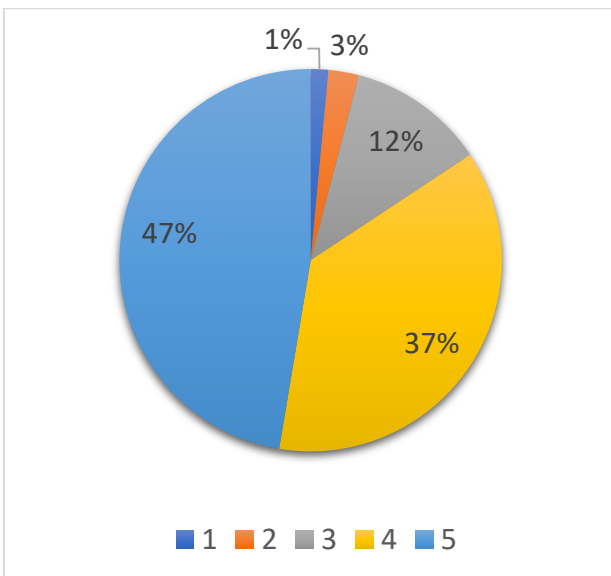
# **STRUCTURED FEEDBACK ANALYSIS**

**School of Technology**

# (a) Students (SOT)

Ratings	Q1- The Syllabus is comprehensive enough to give adequate knowledge of the Subjects.
1	11
2	19
3	86
4	273
5	350
<b>Grand Total</b>	<b>739</b>

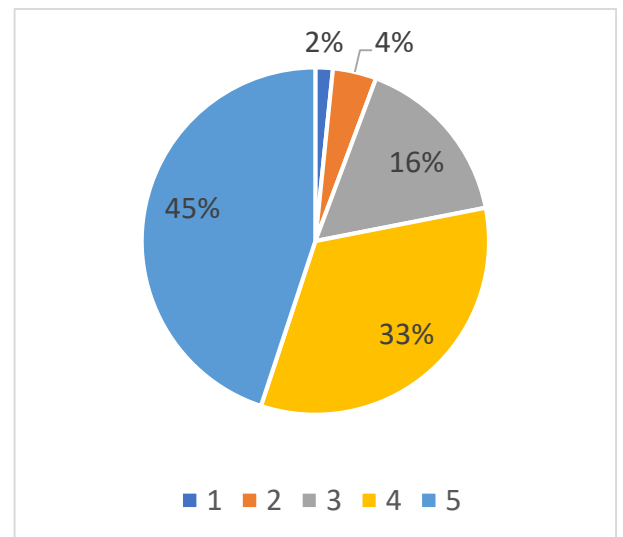
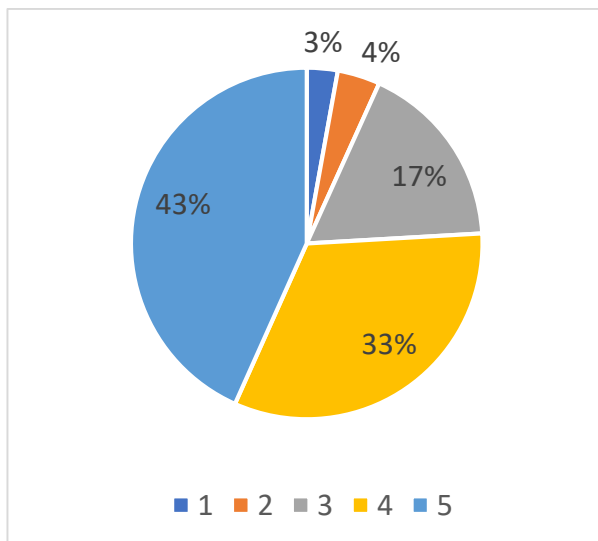
Ratings	Q2-The Syllabus are well structured to achieve the learning outcomes.
1	13
2	16
3	93
4	256
5	361
<b>Grand Total</b>	<b>739</b>



1 is the lowest and 5 is the highest in Ratings

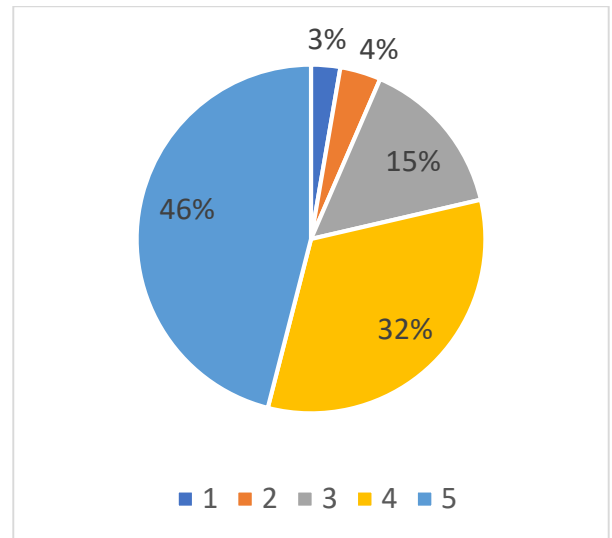
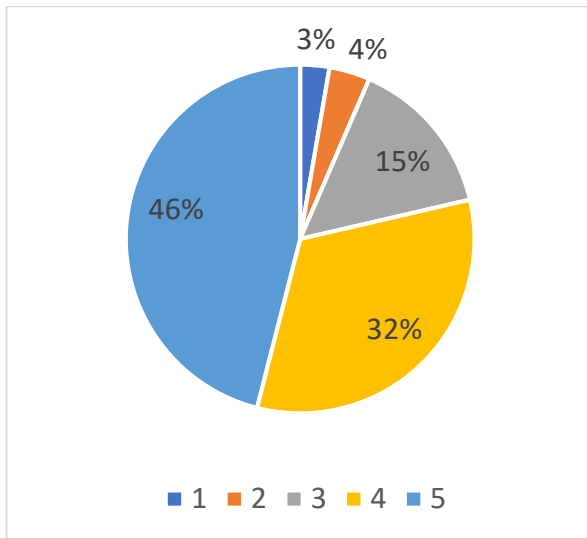
Ratings	Q3-The Syllabus are well organized in terms of teaching hours, content flow, coverage, activities, access to learning materials, etc.
1	21
2	29
3	128
4	241
5	320
<b>Grand Total</b>	<b>739</b>

Ratings	Q4-The Syllabus is need based and covered with the fundamentals as well as advanced topics.
1	12
2	30
3	120
4	245
5	332
<b>Grand Total</b>	<b>739</b>



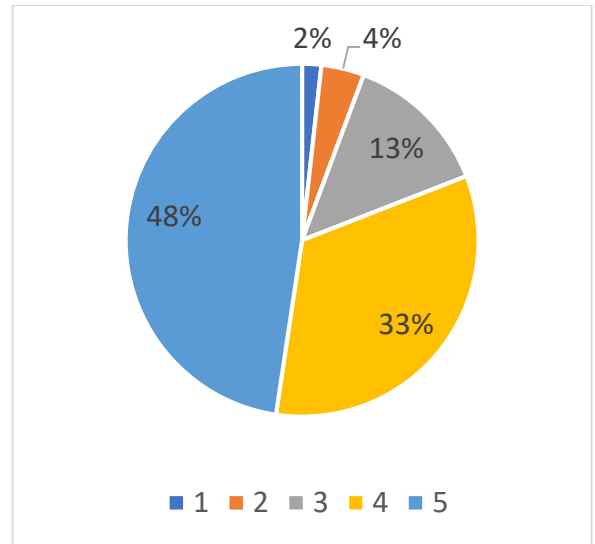
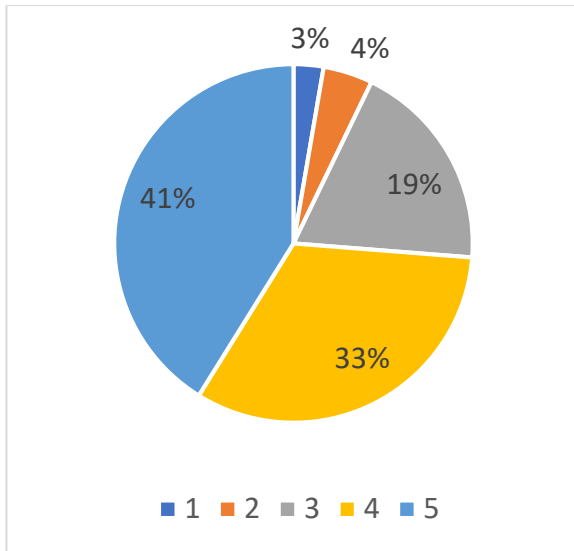
Ratings	Q5-The Syllabus is relevant to the present day situation / researchers.
1	20
2	28
3	110
4	241
5	340
<b>Grand Total</b>	<b>739</b>

Ratings	Q6-The Syllabus is adequate to foster Entrepreneurship and encourage higher studies.
1	24
2	41
3	136
4	208
5	330
<b>Grand Total</b>	<b>739</b>



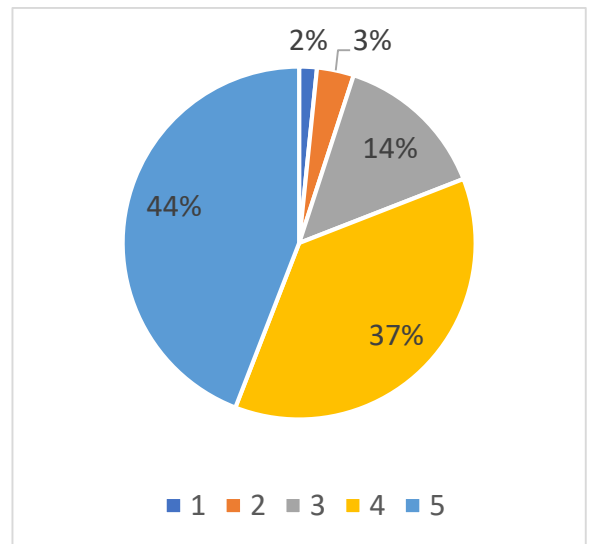
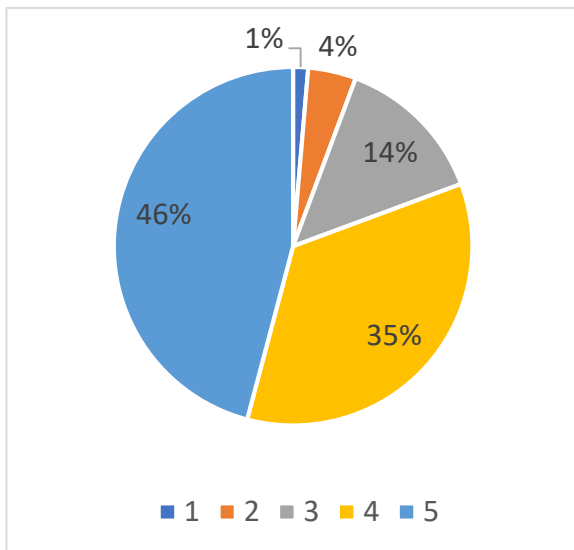
Ratings	Q7-Relevance of the Syllabus with Employability.
1	20
2	33
3	141
4	241
5	304
<b>Grand Total</b>	<b>739</b>

Ratings	Q8-Syllabus expose to new knowledge and practices
1	13
2	29
3	99
4	246
5	352
<b>Grand Total</b>	<b>739</b>



Ratings	Q9-The Syllabus is relevant and adequate in terms of scope, depth and choice to help develop the required competencies amongst students.
1	10
2	32
3	101
4	257
5	339
<b>Grand Total</b>	<b>739</b>

Ratings	Q10-The Syllabus is well structured and rigorous.
1	12
2	25
3	104
4	272
5	326
<b>Grand Total</b>	<b>739</b>



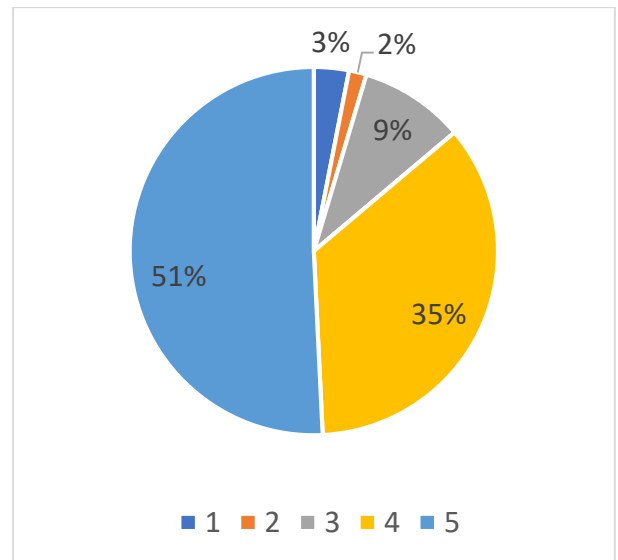
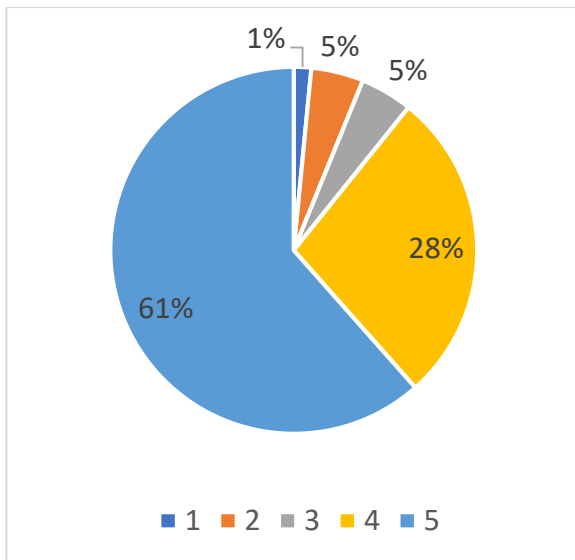
*[Handwritten signature]*



## (b) Alumni (SOT)

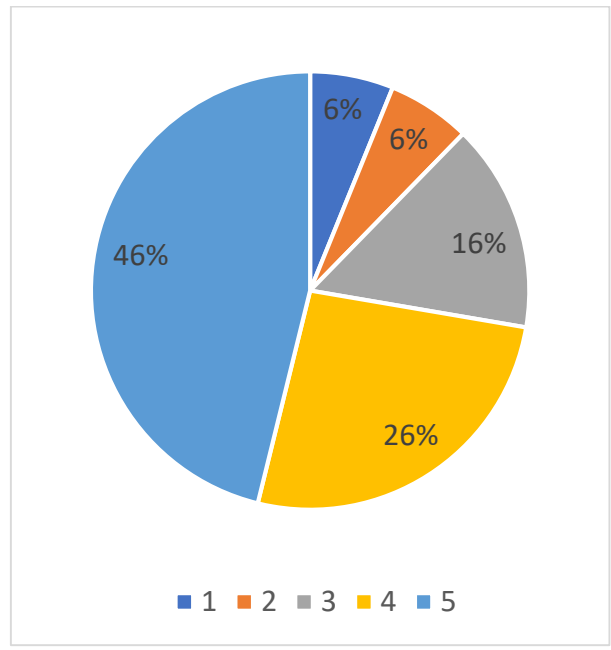
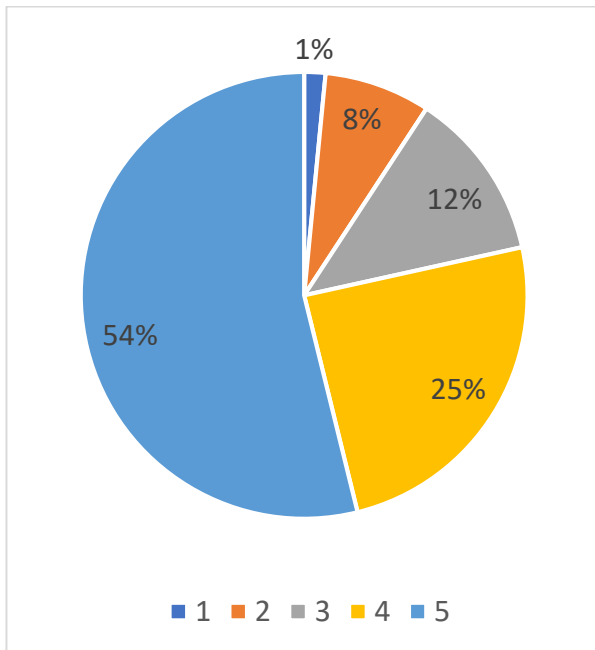
<i>Ratings</i>	Q1-Rate the quality and relevance of the syllabus of the Courses.
1	1
2	3
3	3
4	18
5	40
<b>Grand Total</b>	<b>65</b>

<i>Ratings</i>	Q2 -The Syllabus are well structured to achieve the learning outcomes.
1	2
2	1
3	6
4	23
5	33
<b>Grand Total</b>	<b>65</b>



<i>Ratings</i>	Q3-The Syllabus are well organized in terms of teaching hours, content flow, coverage, activities, access to learning materials, etc.
1	1
2	5
3	8
4	16
5	35
<b>Grand Total</b>	<b>65</b>

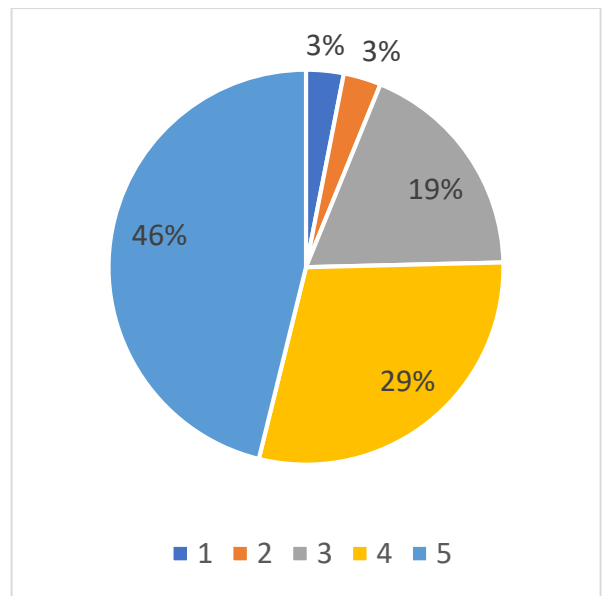
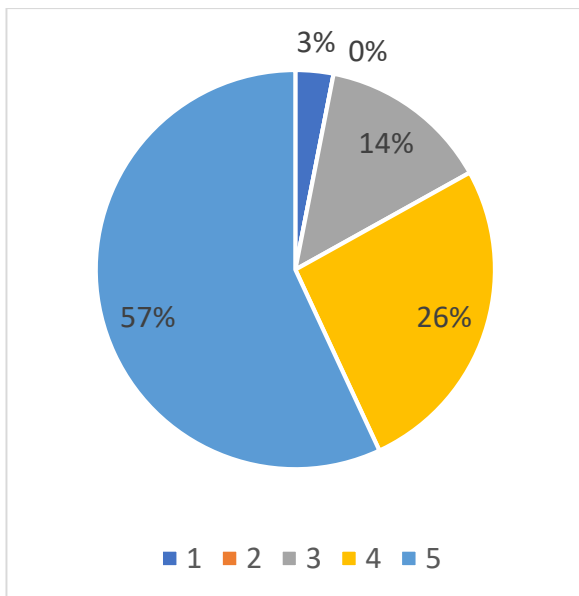
<i>Ratings</i>	Q4-Relevance of the Syllabus with the Industry / Society / Economy / Environment.
1	4
2	4
3	10
4	17
5	30
<b>Grand Total</b>	<b>65</b>





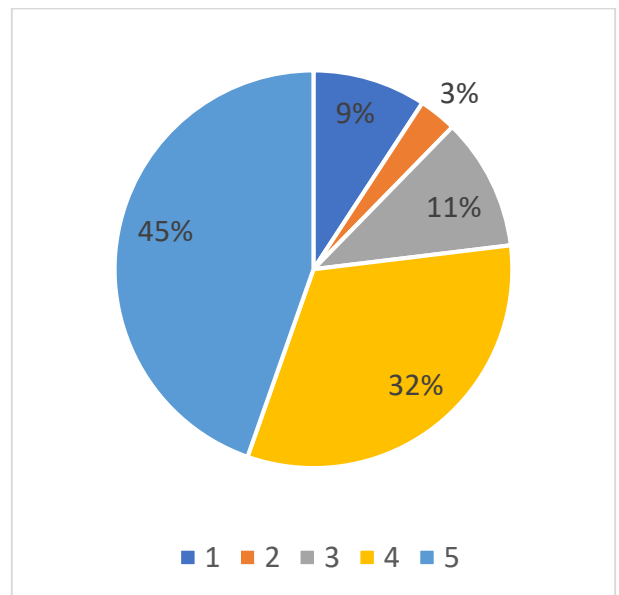
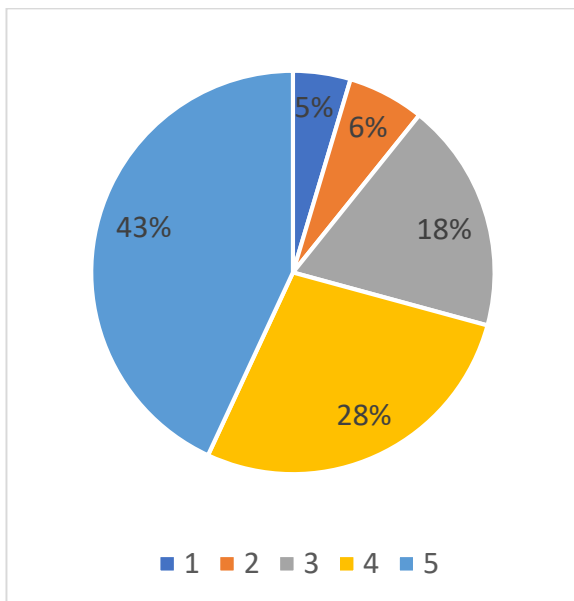
<i>Ratings</i>	Q5-The Syllabus covered the fundamentals as well as advanced topics.
1	2
2	0
3	9
4	17
5	37
<b>Grand Total</b>	<b>65</b>

<i>Ratings</i>	Q6-The Syllabus is relevant to the present day situation / researchers.
1	2
2	2
3	12
4	19
5	30
<b>Grand Total</b>	<b>65</b>

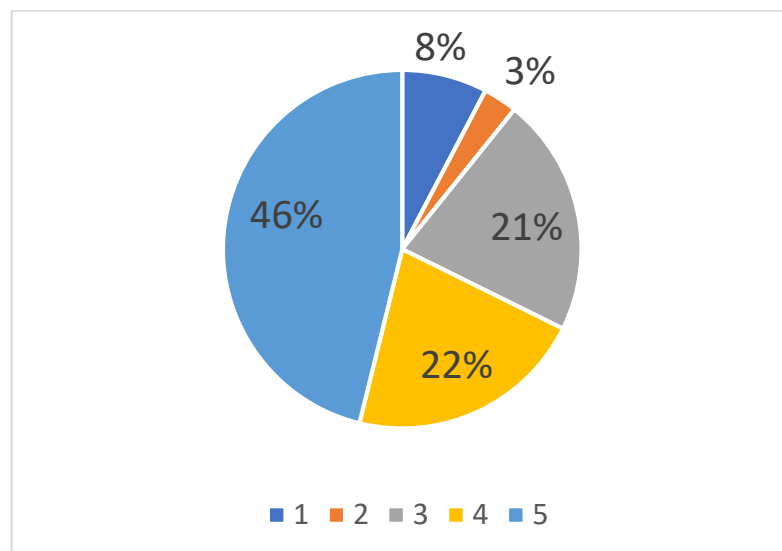


<i>Ratings</i>	Q7-The Syllabus is adequate to foster Entrepreneurship and encourage higher studies.
1	3
2	4
3	12
4	18
5	28
<b>Grand Total</b>	<b>65</b>

<i>Ratings</i>	Q8-Relevance of the Syllabus with Employability.
1	6
2	2
3	7
4	21
5	29
<b>Grand Total</b>	<b>65</b>



<i>Ratings</i>	Q9-Relevance of the Syllabus with the current job.
1	5
2	2
3	14
4	14
5	30
<b>Grand Total</b>	<b>65</b>



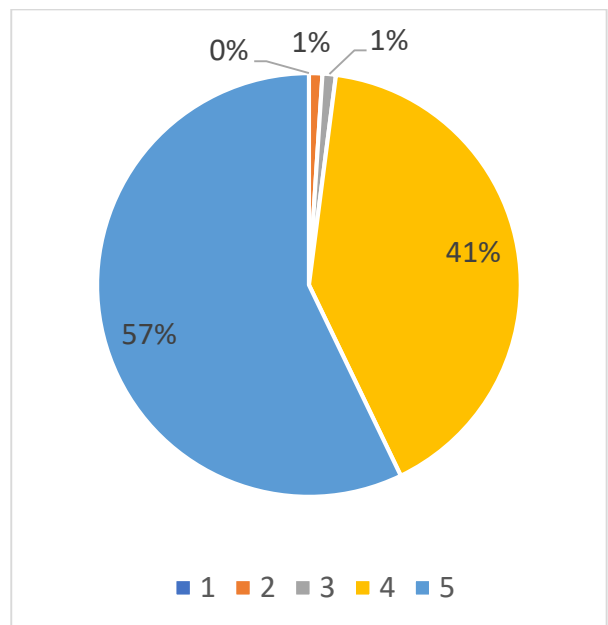
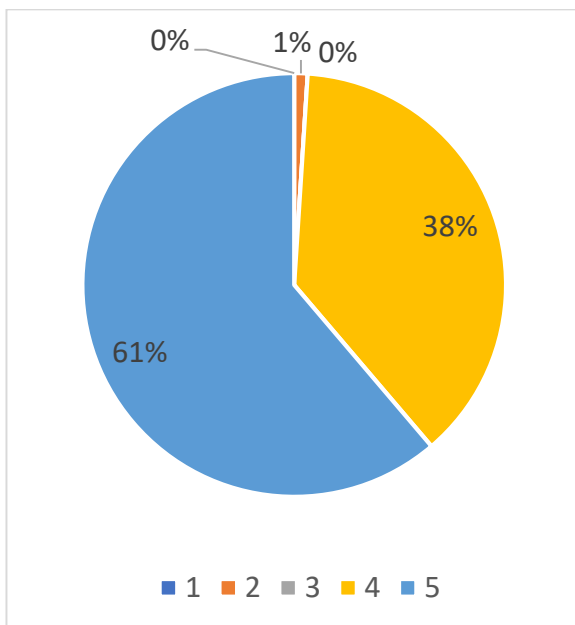
*[Handwritten signature]*



## (c) Faculty (SOT)

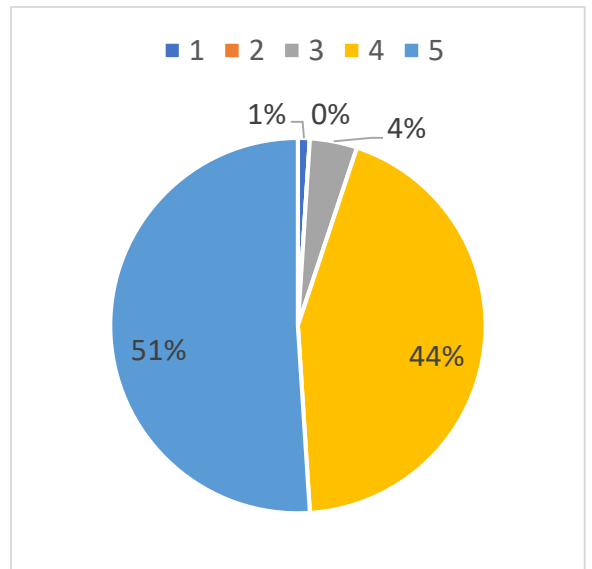
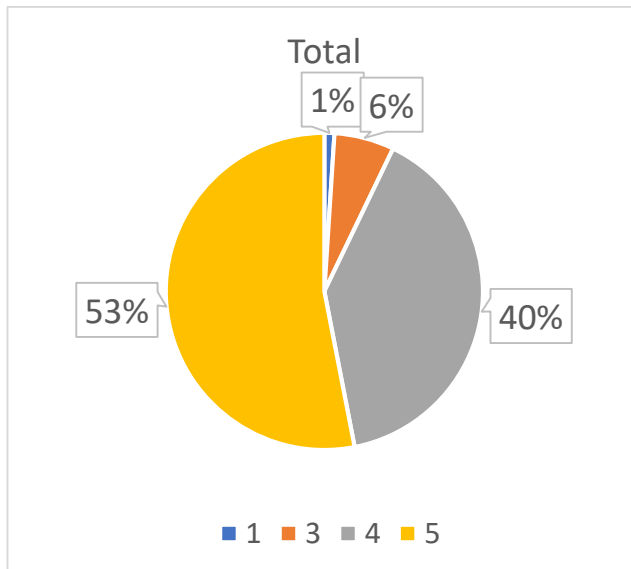
Ratings	Q1-Rate the quality and relevance of the syllabus of the Courses
1	0
2	1
3	0
4	37
5	60
Grand Total	98

Ratings	Q2-The contents of the Syllabus are in relation to the technological advancements
1	0
2	1
3	1
4	40
5	56
Grand Total	98



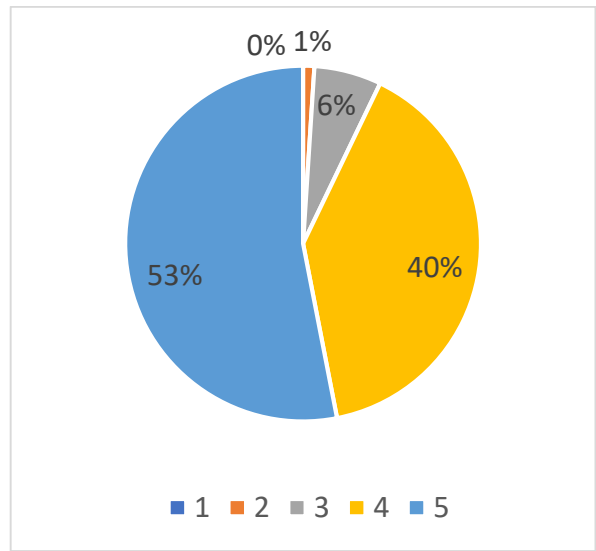
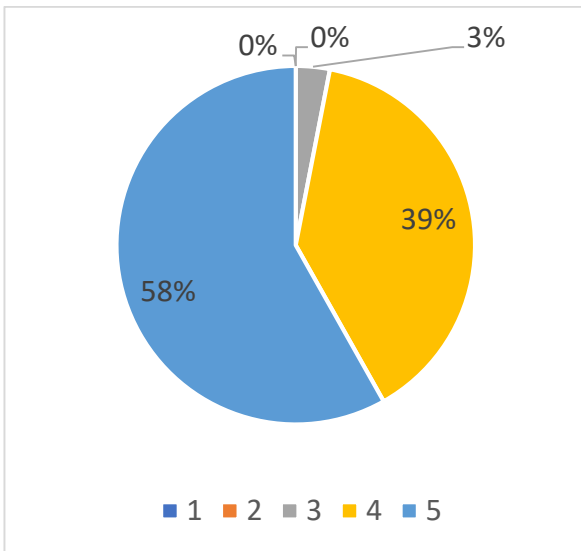
Ratings	Q3-The Syllabus are well organized in terms of teaching hours, content flow, coverage, activities, assessment, access to learning materials, etc.
1	1
2	0
3	6
4	39
5	52
Grand Total	98

Ratings	Q4-Relevance of the Syllabus with the Industry / Society / Economy / Environment
1	1
2	0
3	4
4	43
5	50
Grand Total	98



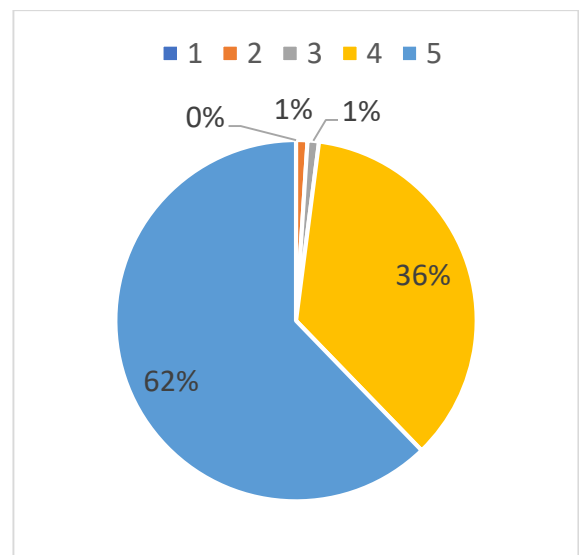
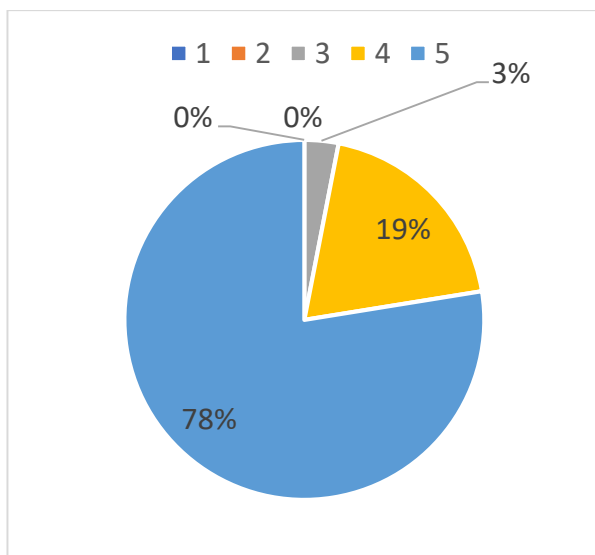
Ratings	Q5-The Syllabus is need based and covered the fundamentals as well as advanced topics
1	0
2	0
3	3
4	38
5	57
Grand Total	98

Ratings	Q6-Relevance of the Syllabus with Employability
1	0
2	1
3	6
4	39
5	52
Grand Total	98



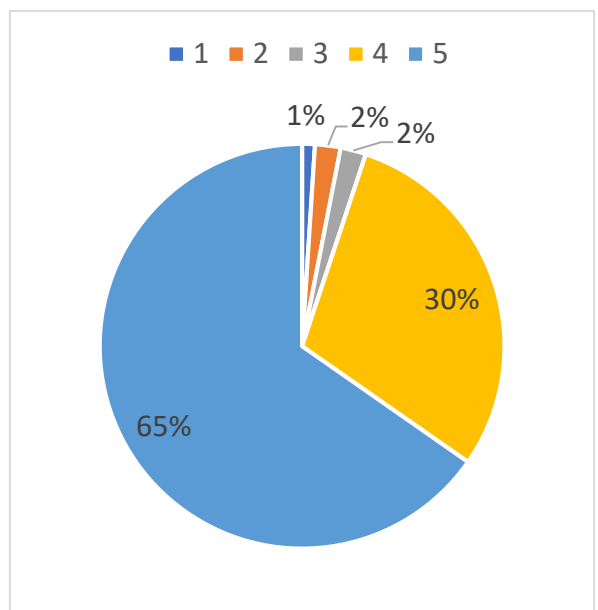
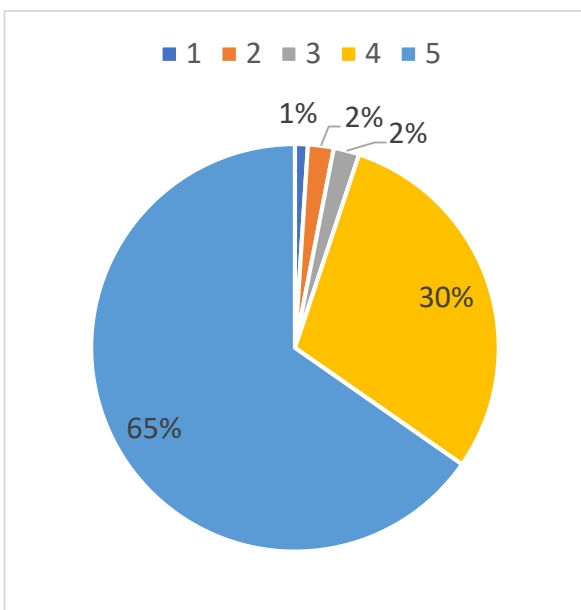
Ratings	Q7-Course objectives and Outcomes of the Course are well defined in the Syllabus
1	0
2	0
3	3
4	19
5	76
Grand Total	98

Ratings	Q8-The Syllabus is relevant and adequate in terms of scope, depth and choice to help develop the required competencies amongst students
1	0
2	1
3	1
4	35
5	61
Grand Total	98



Ratings	Q9-Faculty feedback have been considered in framing the Syllabus
1	1
2	2
3	2
4	29
5	64
Grand Total	98

Ratings	Q10-Faculty feedback have been considered in framing the Syllabus
1	1
2	2
3	2
4	29
5	64
Grand Total	98



*[Handwritten signature]*



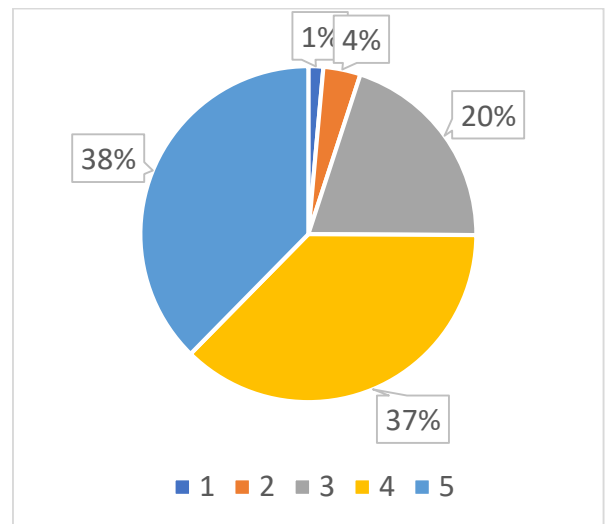
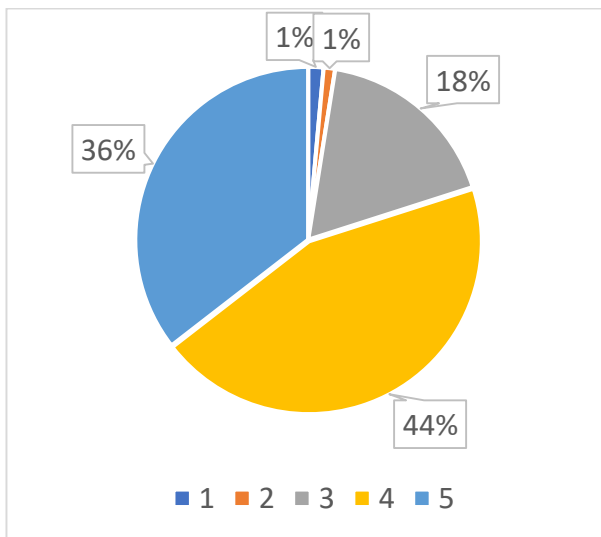


# School of Liberal Studies

## (a) Students (SLS)

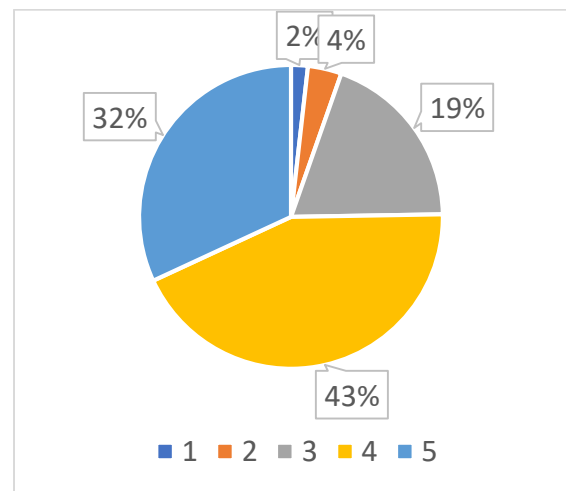
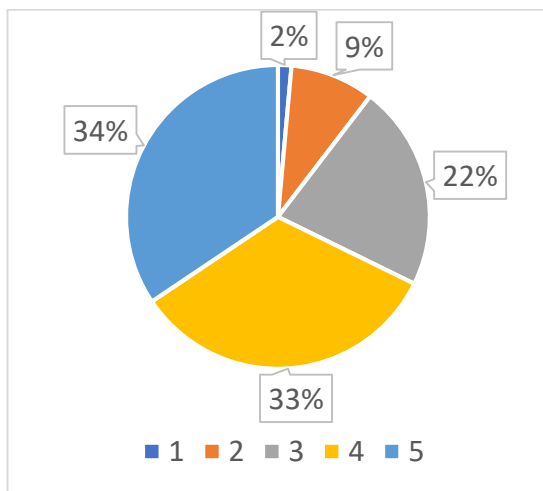
Ratings	Q1-The Syllabus is comprehensive enough to give adequate knowledge of the Subjects.
1	4
2	3
3	49
4	124
5	99
Grand Total	279

Ratings	Q2-The Syllabus are well structured to achieve the learning outcomes.
1	4
2	10
3	56
4	104
5	105
Grand Total	279



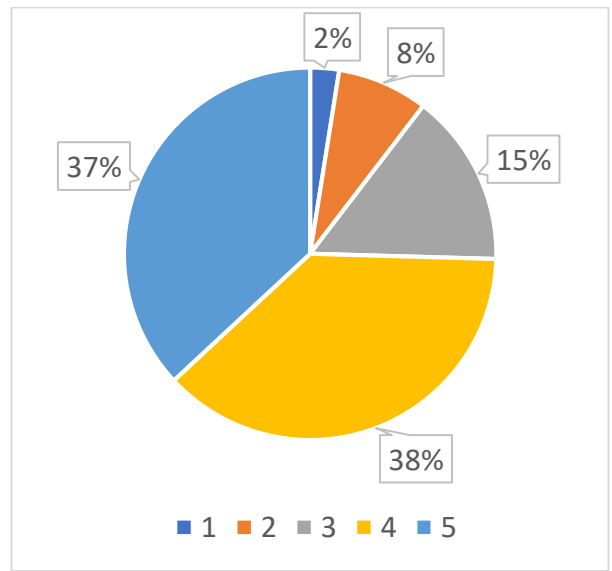
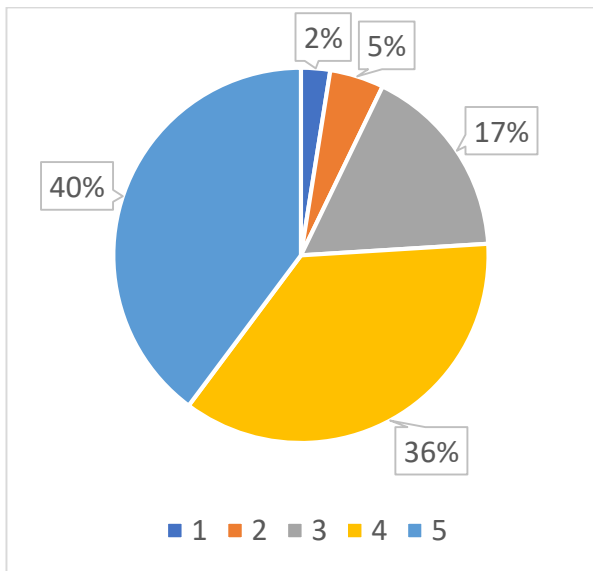
Ratings	Q3-The Syllabus are well organized in terms of teaching hours, content flow, coverage, activities, access to learning materials, etc.
1	4
2	25
3	61
4	93
5	96
Grand Total	279

Ratings	Q4- The Syllabus is need based and covered with the fundamentals as well as advanced topics.
1	5
2	10
3	54
4	121
5	89
Grand Total	279



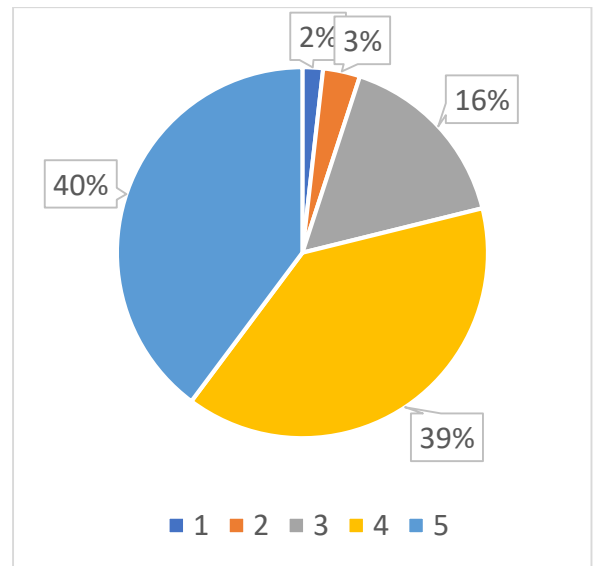
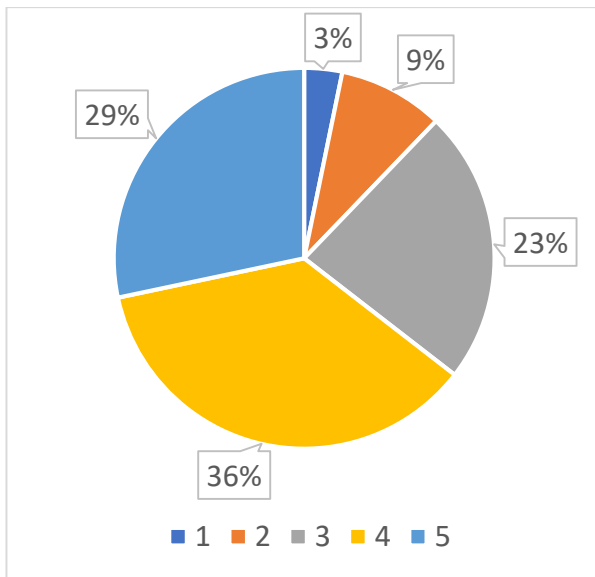
Ratings	Q5-The Syllabus is relevant to the present day situation / researchers.
1	7
2	13
3	47
4	101
5	111
Grand Total	279

Ratings	Q6- The Syllabus is adequate to foster Entrepreneurship and encourage higher studies.
1	7
2	22
3	42
4	105
5	103
Grand Total	279



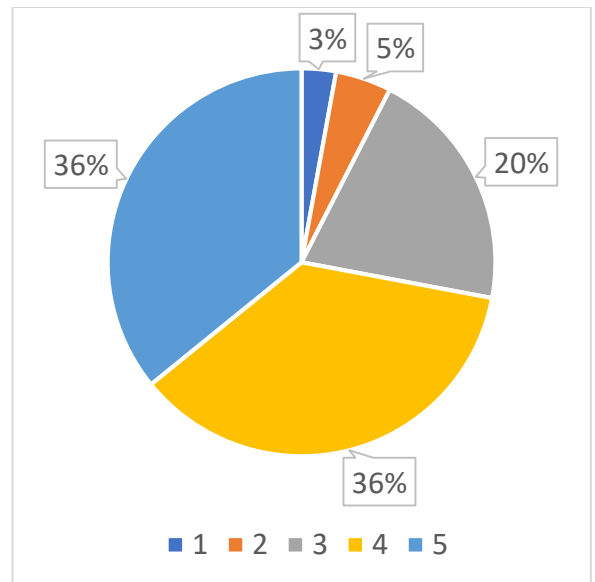
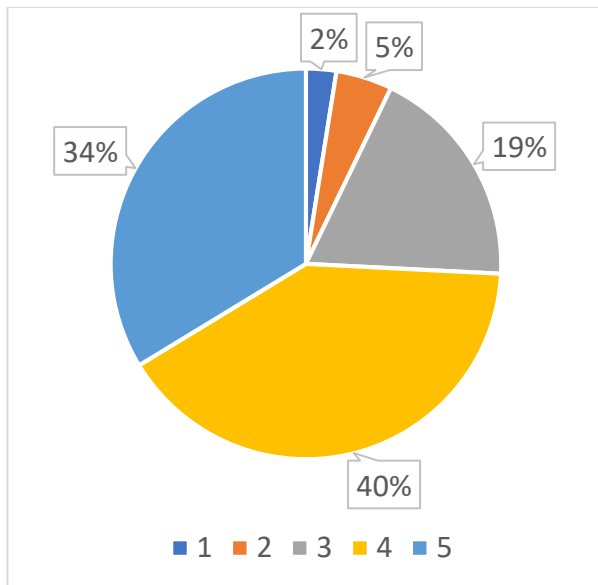
Ratings	Q7-Relevance of the Syllabus with Employability.
1	9
2	25
3	65
4	101
5	79
Grand Total	279

Ratings	Q8-Syllabus expose to new knowledge and practices
1	5
2	9
3	45
4	109
5	111
Grand Total	279



Ratings	Q9-The Syllabus is well structured and rigorous.
1	7
2	13
3	52
4	113
5	94
Grand Total	279

Ratings	Q10-The Syllabus is relevant and adequate in terms of scope, depth and choice to help develop the required competencies amongst students.
1	8
2	13
3	57
4	101
5	100
Grand Total	279



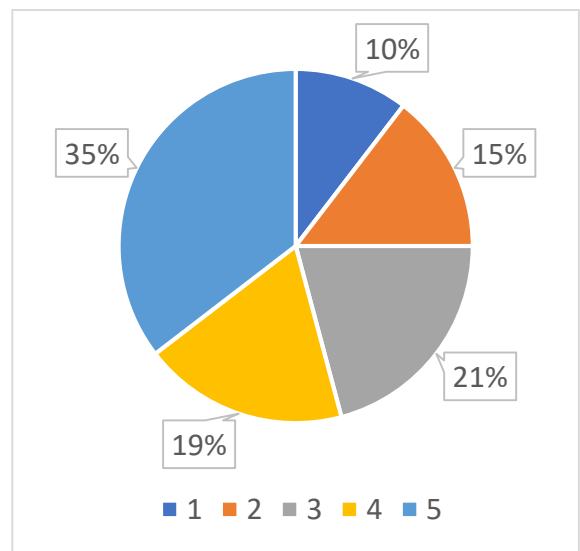
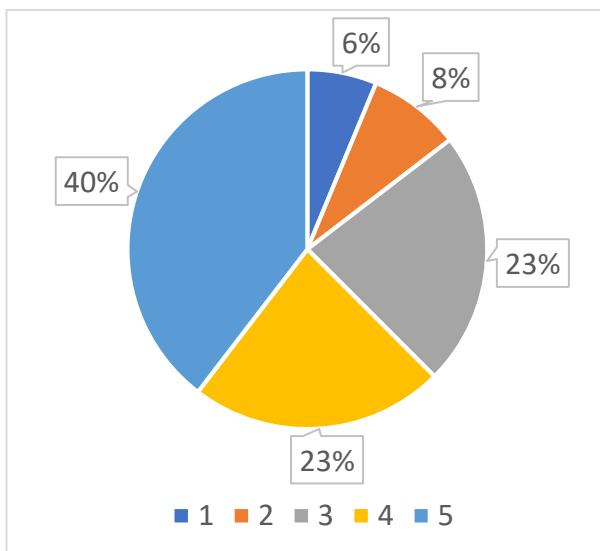
*[Handwritten signature]*



## (b) Alumni (SLS)

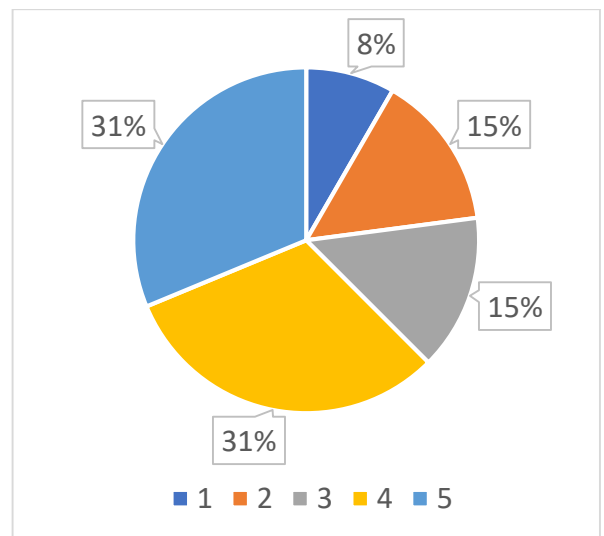
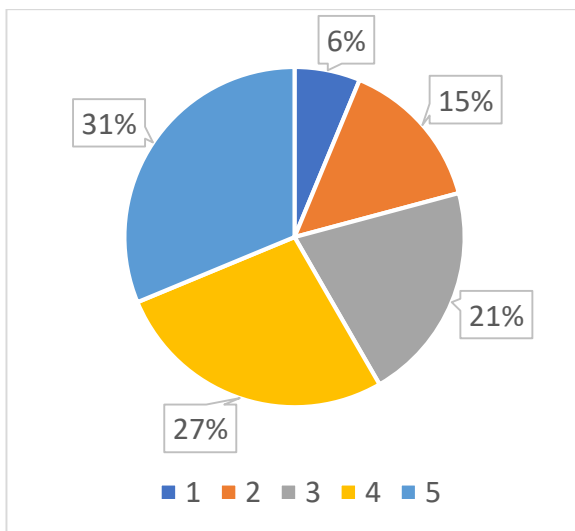
Ratings	Q1-Rate the quality and relevane of the syllabus of the Courses.
1	3
2	4
3	11
4	11
5	19
Grand Total	48

Ratings	Q2-The Syllabus are well structured to achieve the learning outcomes.
1	5
2	7
3	10
4	9
5	17
Grand Total	48



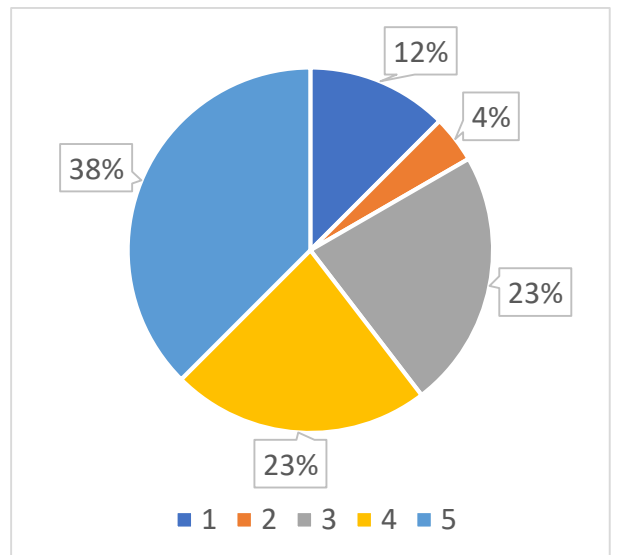
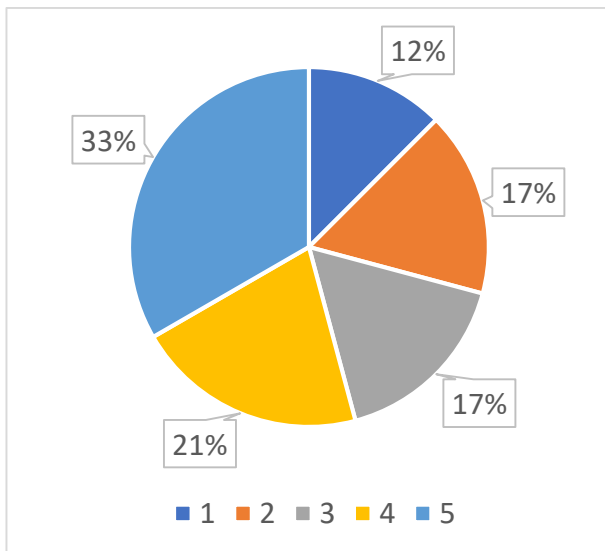
Ratings	Q3-The Syllabus are well organized in terms of teaching hours, content flow, coverage, activities, access to learning materials, etc.
1	3
2	7
3	10
4	13
5	15
Grand Total	48

Ratings	Q4-Relevance of the Syllabus with the Industry / Society / Economy / Environment.
1	4
2	7
3	7
4	15
5	15
Grand Total	48



Ratings	Q5-The Syllabus covered the fundamentals as well as advanced topics.
1	6
2	8
3	8
4	10
5	16
Grand Total	48

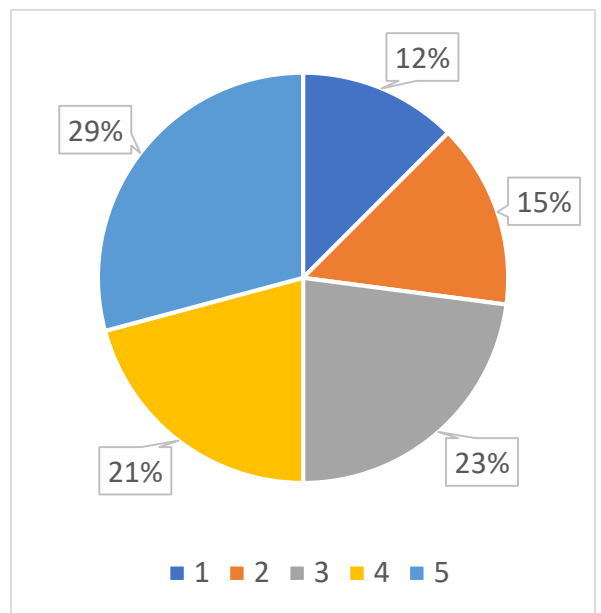
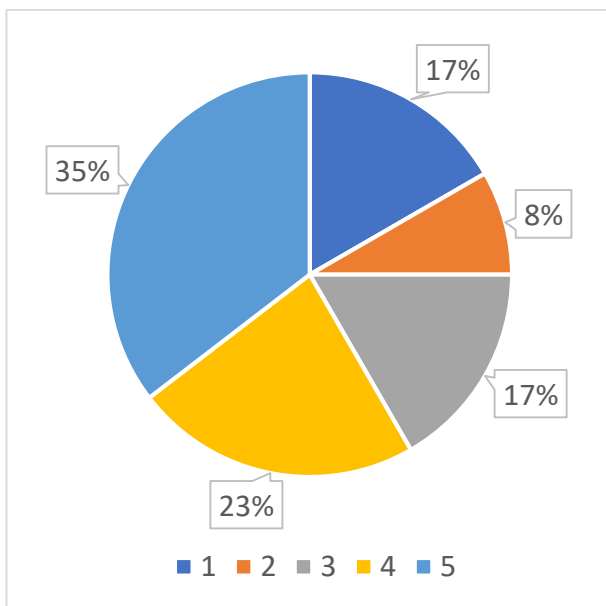
Ratings	Q6-The Syllabus is relevant to the present day situation / researchers.
1	6
2	2
3	11
4	11
5	18
Grand Total	48



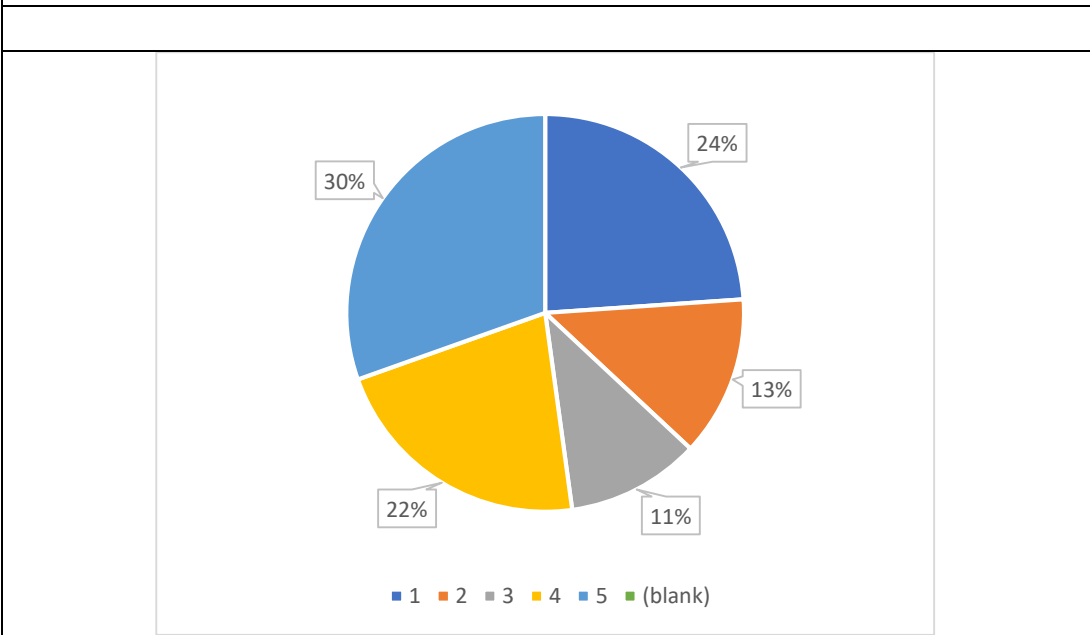


Ratings	Q7-The Syllabus is adequate to foster Entrepreneurship and encourage higher studies.
1	8
2	4
3	8
4	11
5	17
Grand Total	48

Ratings	Q8-Relevance of the Syllabus with Employability.
1	6
2	7
3	11
4	10
5	14
Grand Total	48



Ratings	Q9-Relevance of the Syllabus with the current job.
1	11
2	6
3	5
4	10
5	14
(blank)	
Grand Total	46



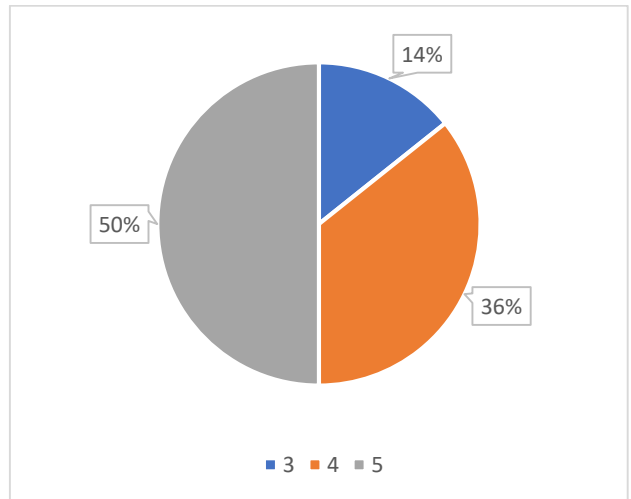
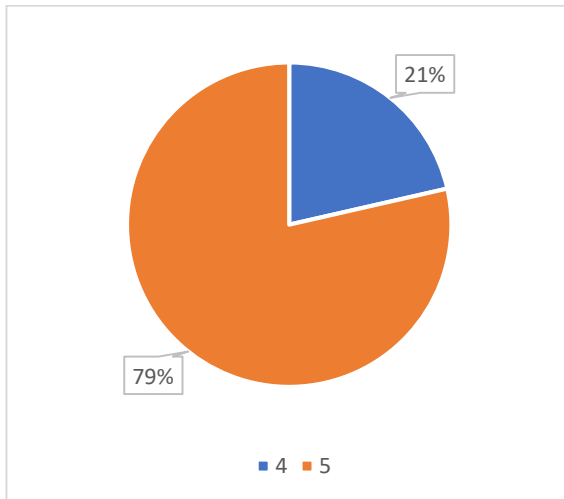
*[Handwritten signature]*



## (c) Faculty (SLS)

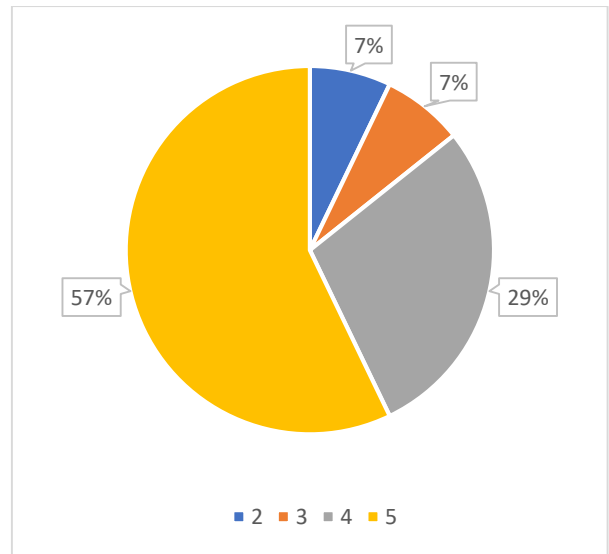
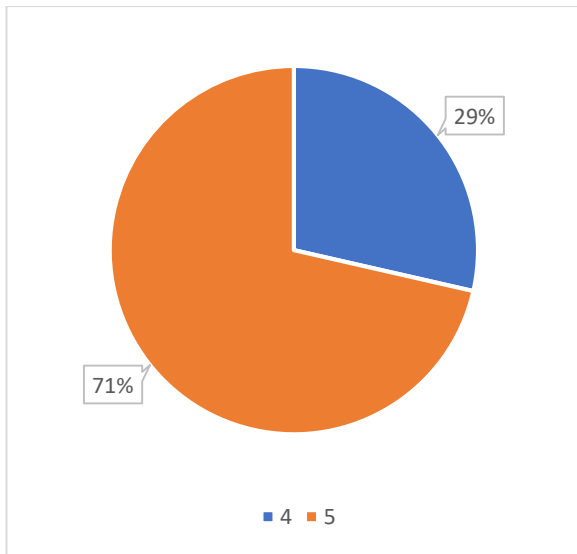
Ratings	Q1- Rate the quality and relevance of the syllabus of the Courses.
4	3
5	11
Grand Total	14

Ratings	Q2-The contents of the Syllabus are in relation to the technological advancements.
3	2
4	5
5	7
Grand Total	14



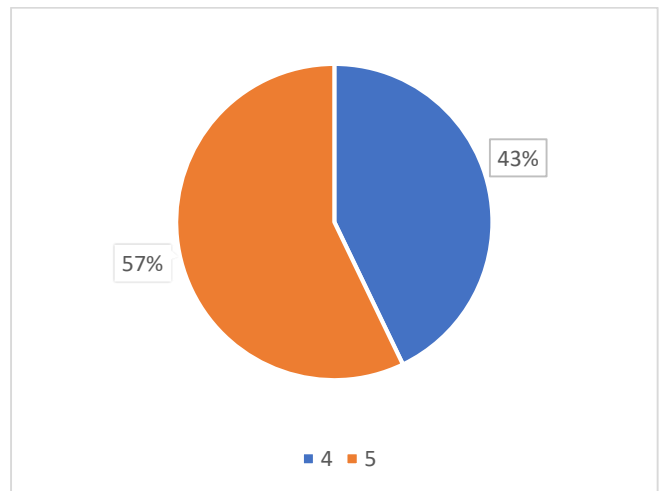
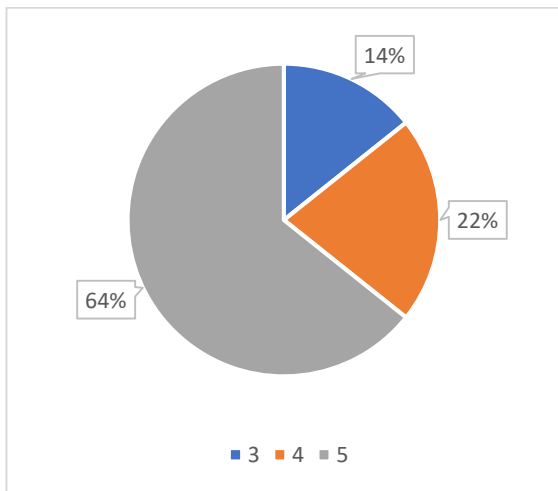
Ratings	Q3-The Syllabus are well organized in terms of teaching hours, content flow, coverage, activities, assessment, access to learning materials, etc.
4	4
5	10
<b>Grand Total</b>	<b>14</b>

Ratings	Q4-Relevance of the Syllabus with the Industry / Society / Economy / Environment.
2	1
3	1
4	4
5	8
<b>Grand Total</b>	<b>14</b>

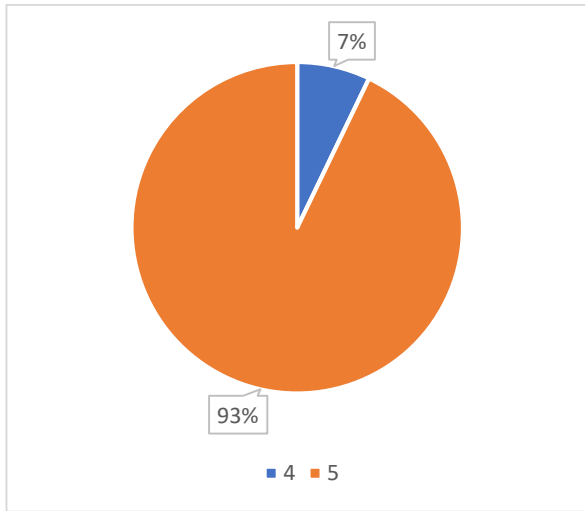


Ratings	Q5-The Syllabus is need based and covered the fundamentals as well as advanced topics.
3	2
4	3
5	9
Grand Total	14

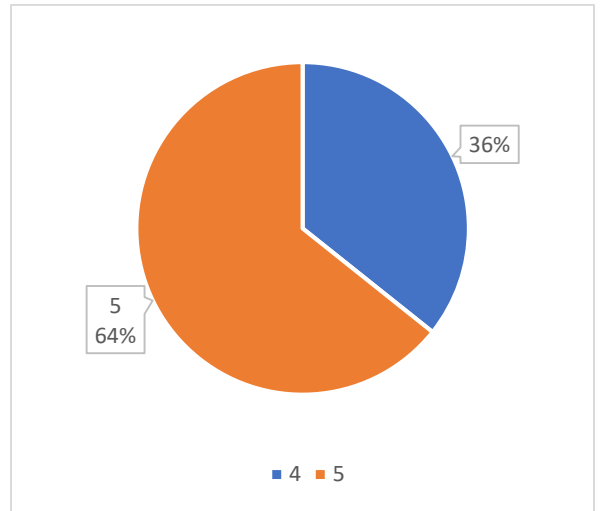
Ratings	Q6-Relevance of the Syllabus with Employability.
4	6
5	8
Grand Total	14



Ratings	Q7-Course objectives and Outcomes of the Course are well defined in the Syllabus.
4	1
5	13
Grand Total	14

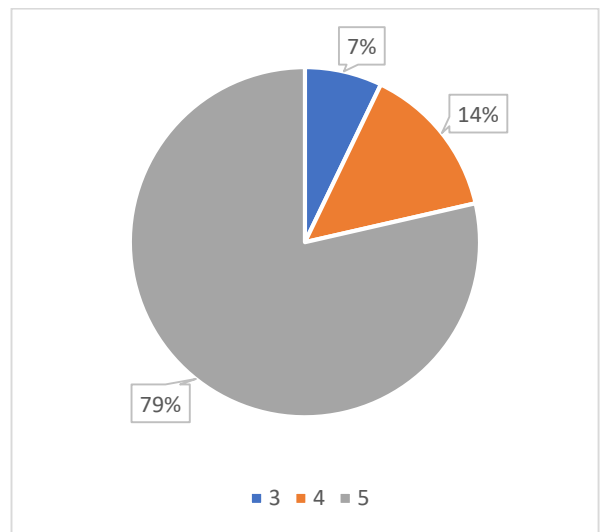
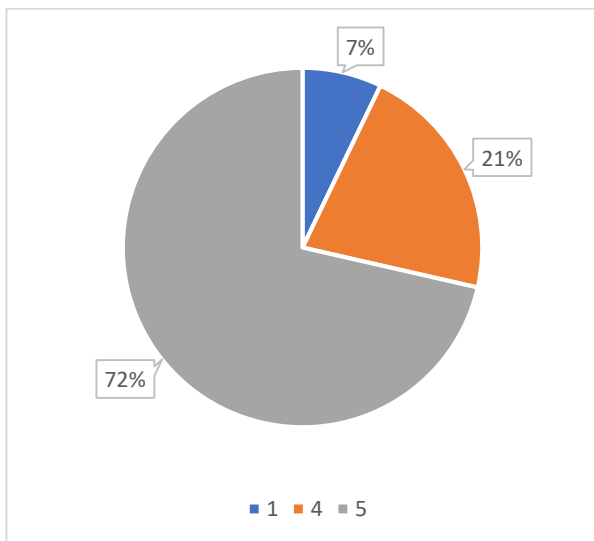


Ratings	Q8-The Syllabus is relevant and adequate in terms of scope, depth and choice to help develop the required competencies amongst students.
4	5
5	9
Grand Total	14



Ratings	Q9-Faculty feedback have been considered in framing the Syllabus.
1	1
4	3
5	10
Grand Total	14

Ratings	Q10-Study material is easily available in pursuing the Syllabus.
3	1
4	2
5	11
Grand Total	14

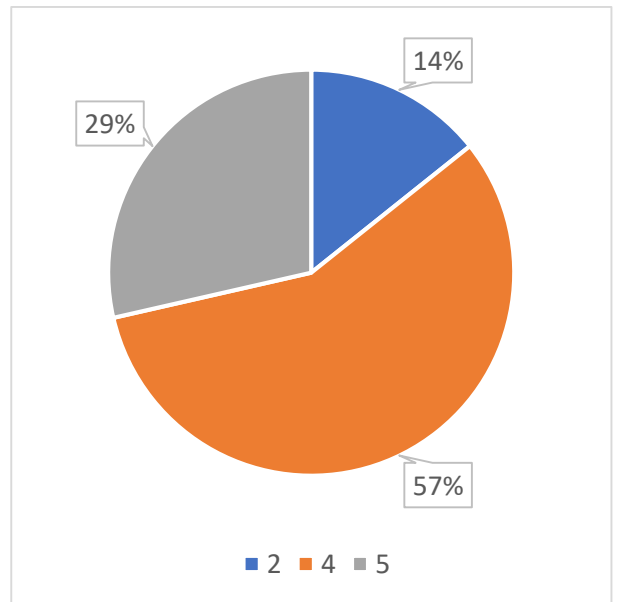
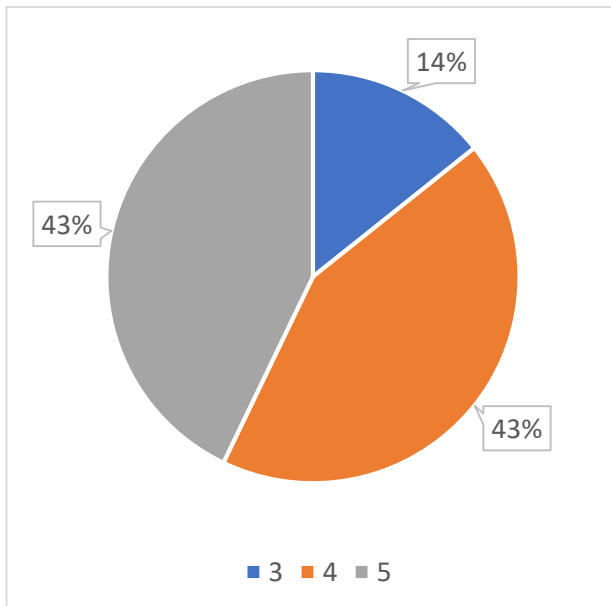



## (d) Employer (SLS)

Ratings	Q1-The Syllabus is capable of developing learning values in students.
3	1
4	3
5	3
Grand Total	7

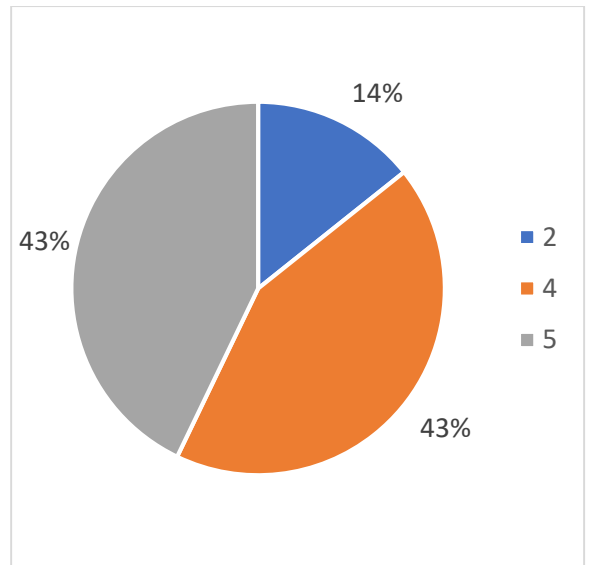
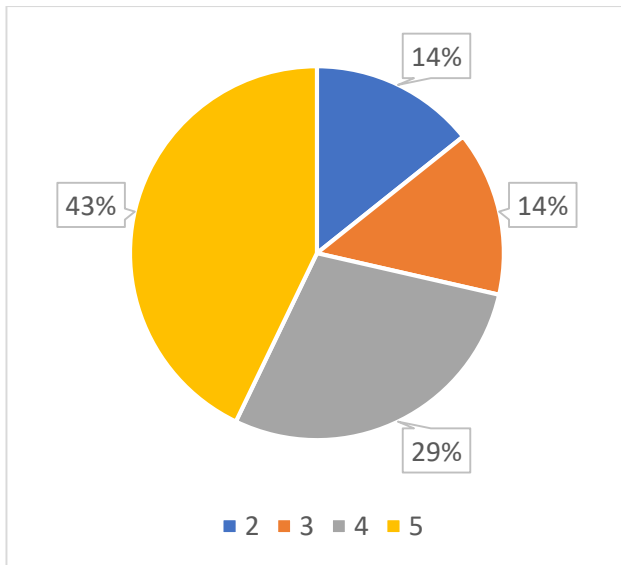
Ratings	Q2-The Syllabus enables the students to analyze the given problem and identify the necessary solutions.
2	1
4	4
5	2
Grand Total	7





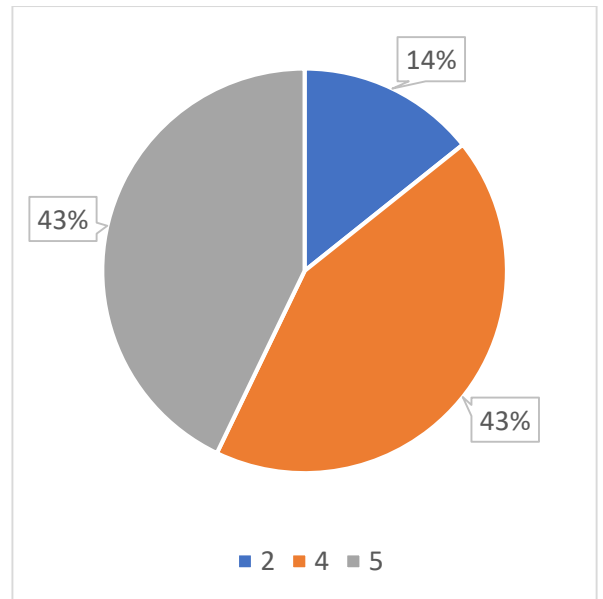
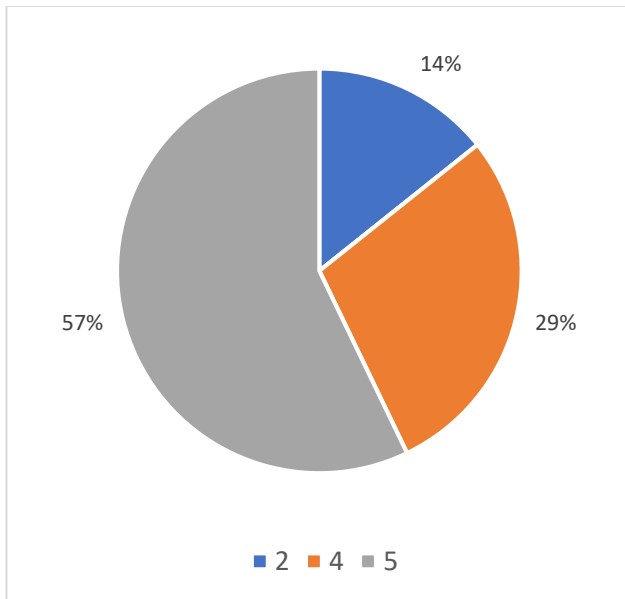
Ratings	Q3-The practical contents in the syllabus are adequate in terms of their relevance to the real life applications.
2	1
3	1
4	2
5	3
Grand Total	7

Ratings	Q4-Relevance of the Syllabus with the Industry / Society / Economy / Environment.
2	1
4	3
5	3
Grand Total	7



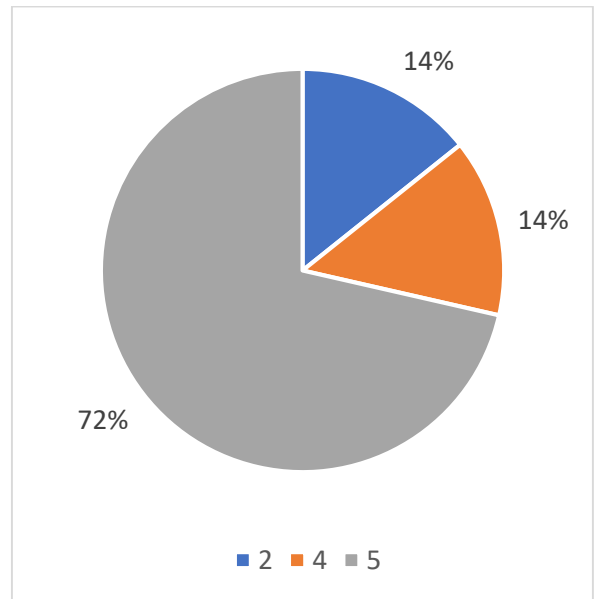
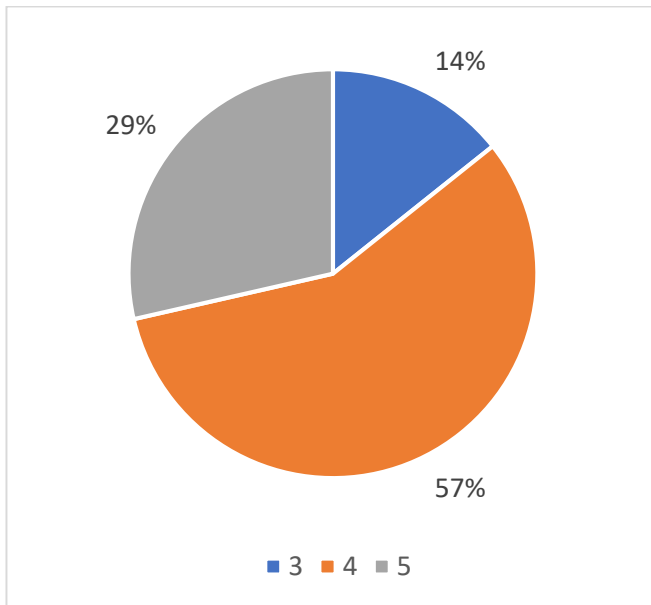
Ratings	Q5-The design of the Syllabus is to bridge the gap between academic and industrial needs.
2	1
4	2
5	4
Grand Total	7

Ratings	Q6-The content of the Syllabus are in relation to the technological advancements.
2	1
4	3
5	3
Grand Total	7



Ratings	Q7-Rate the Syllabus for overall development of the students.
3	1
4	4
5	2
Grand Total	7

Ratings	Q8-Relevance of the Syllabus in relation to the competencies expected out of the Course.
2	1
4	1
5	5
Grand Total	7



*[Handwritten signature]*

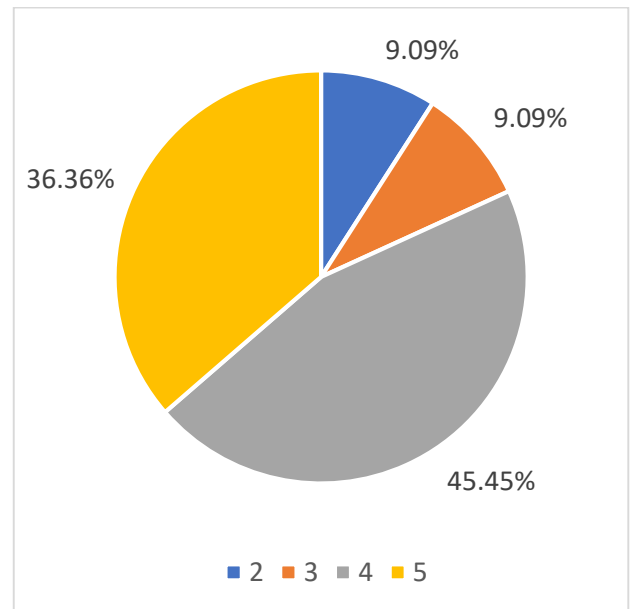
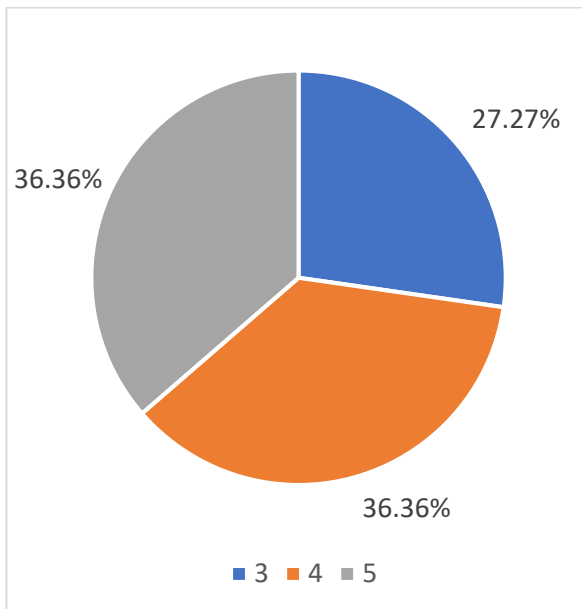


# School of Petroleum Technology

## (a) Students (SPT)

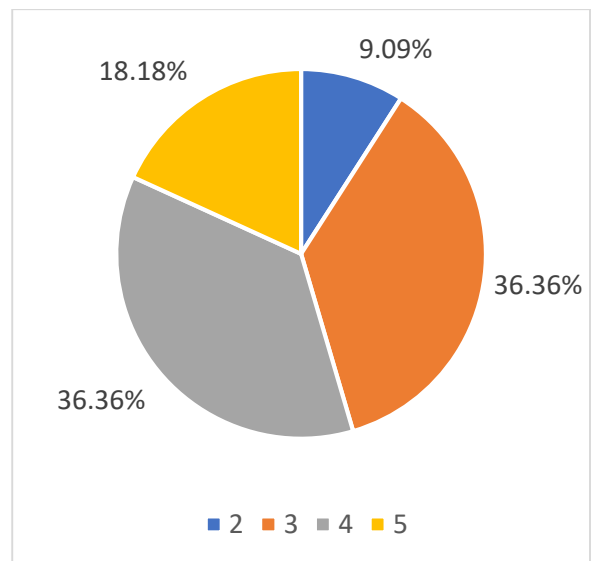
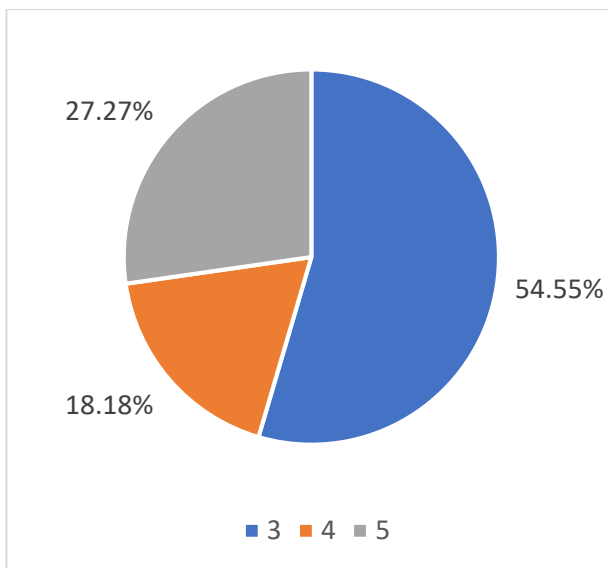
Ratings	Q1-Relevance of the syllabus with the Industry / Society / Economy / Environment.
2	1
3	4
4	4
5	2
Grand Total	11

Ratings	Q2-The syllabus are well organized in terms of teaching hours, content flow, coverage, activities, access to learning materials etc. (1 is the lowest and 5 is the highest in Ratings)
2	1
3	4
4	4
5	2
Grand Total	11



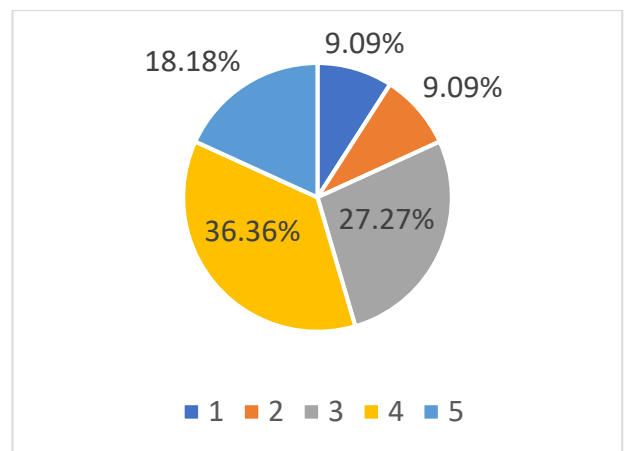
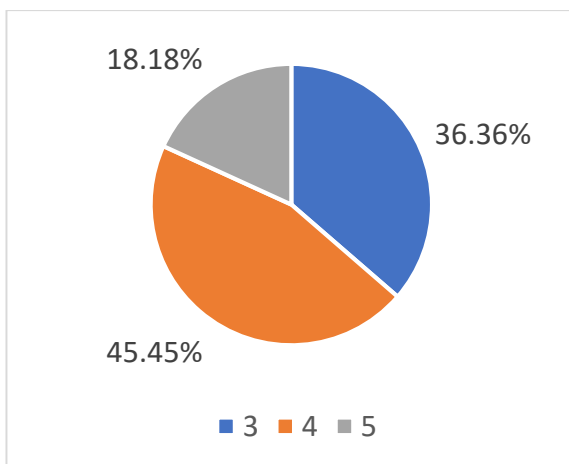
Ratings	Q3-The syllabus are well organized in terms of teaching hours, content flow, coverage, activities, access to learning materials etc.
3	6
4	2
5	3
Grand Total	11

Ratings	Q4-Relevance of the syllabus with the Industry / Society / Economy / Environment.
2	1
3	4
4	4
5	2
Grand Total	11



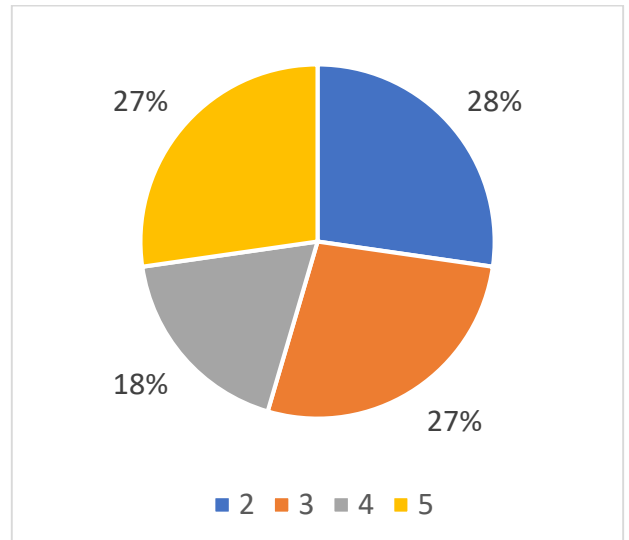
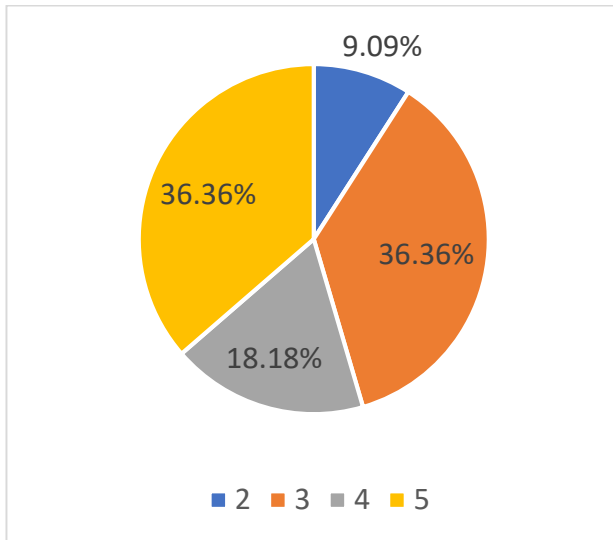
Ratings	Q5-The Syllabus covered the fundamentals as well as advanced topics
3	4
4	5
5	2
Grand Total	11

Ratings	Q6-The Syllabus is relevant to the present day situation / researchers
1	1
2	1
3	3
4	4
5	2
Grand Total	11

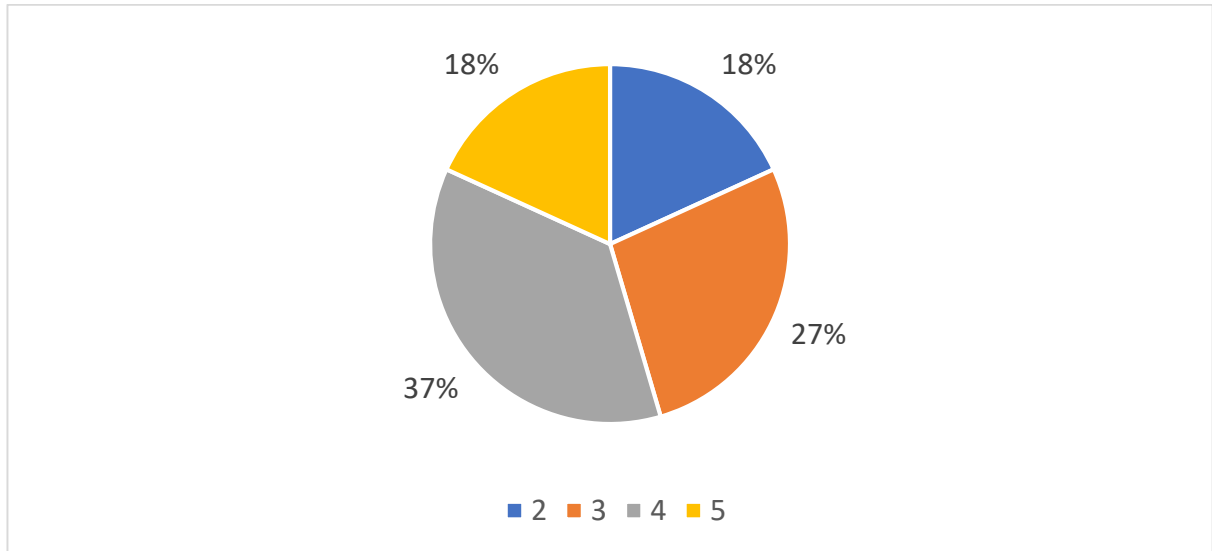


Ratings	Q7-The syllabus is adequate to foster Entrepreneurship and encourage higher studies
1	0
2	1
3	4
4	2
5	4
Grand Total	11

Ratings	Q8-Relevance of the syllabus with Employability
1	0
2	3
3	3
4	2
5	3
Grand Total	11



Ratings	Q9-The syllabus is adequate to foster Entrepreneurship and encourage higher studies
1	
2	2
3	3
4	4
5	2
Grand Total	11



*[Handwritten Signature]*



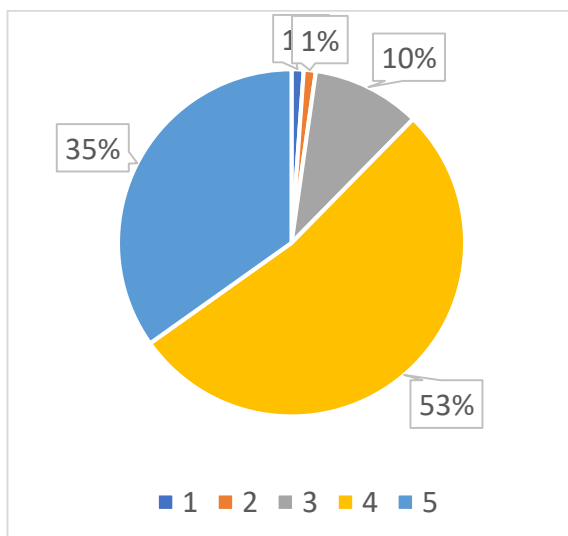
The logo of PDEU (Parul Deemed to be University) is circular, with the text 'PARUL DEEMED TO BE UNIVERSITY' around the perimeter and 'PDEU' in the center. A small star is located at the bottom of the circle.



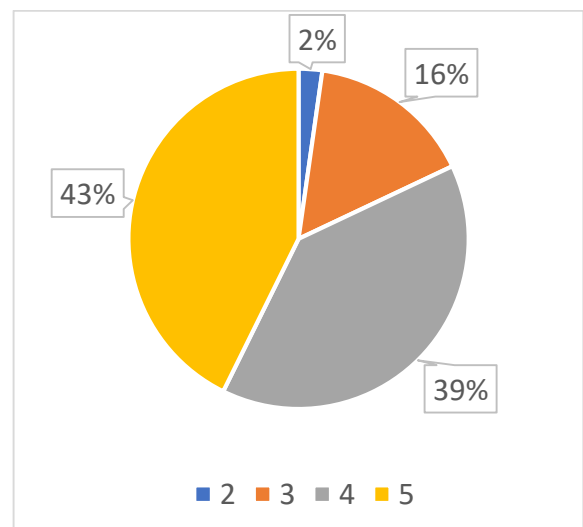
# School of Petroleum Management

## (a) Students (SPM)

Ratings	Q1- The Syllabus is comprehensive enough to give adequate knowledge of the Subjects.
1	1
2	1
3	9
4	47
5	31
<b>Grand Total</b>	<b>89</b>

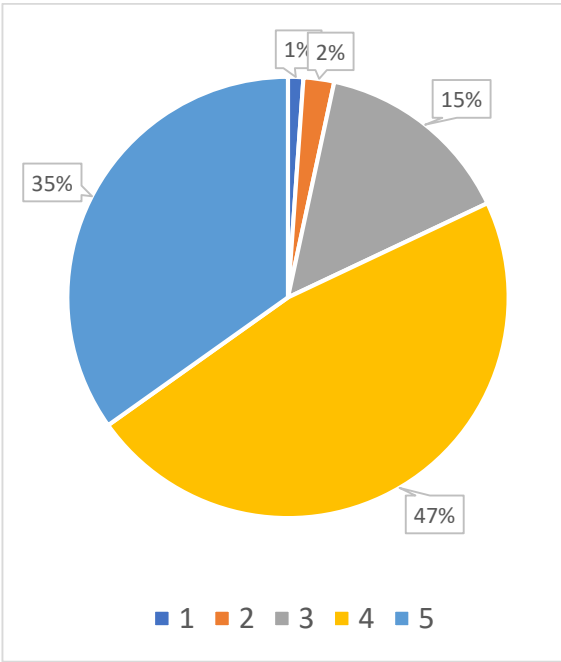
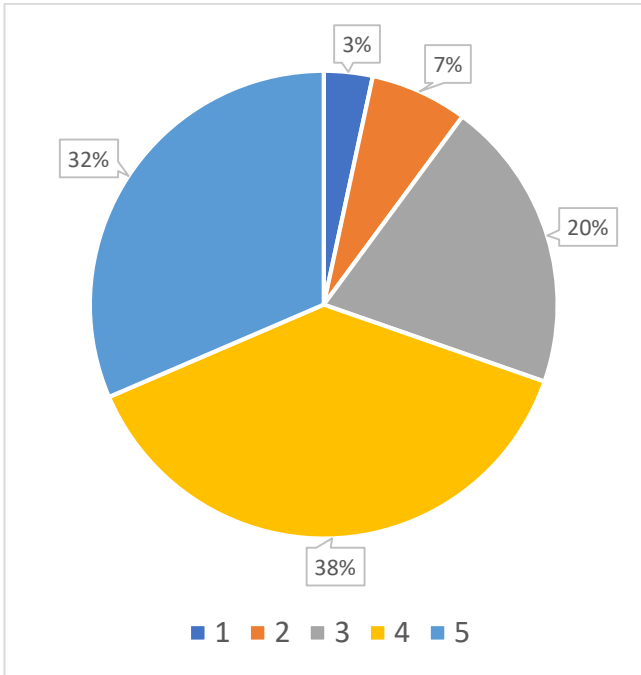


Ratings	Q2- The Syllabus are well structured to achieve the learning outcomes.
2	2
3	14
4	35
5	38
<b>Grand Total</b>	<b>89</b>



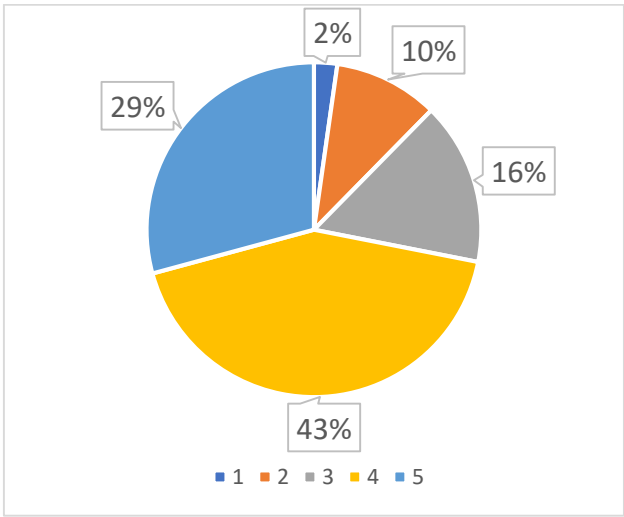
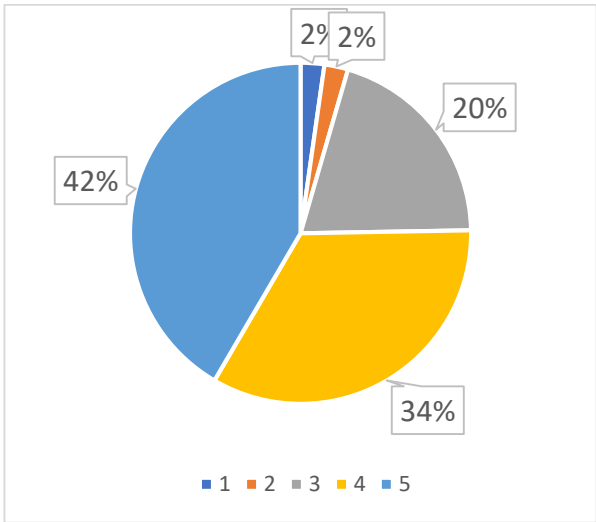
Ratings	Q3-The Syllabus are well organized in terms of teaching hours, content flow, coverage, activities, access to learning materials
1	3
2	6
3	18
4	34
5	28
<b>Grand Total</b>	<b>89</b>

Ratings	Q4-The Syllabus is need based and covered with the fundamentals as well as advanced topics.
1	1
2	2
3	13
4	42
5	31
<b>Grand Total</b>	<b>89</b>

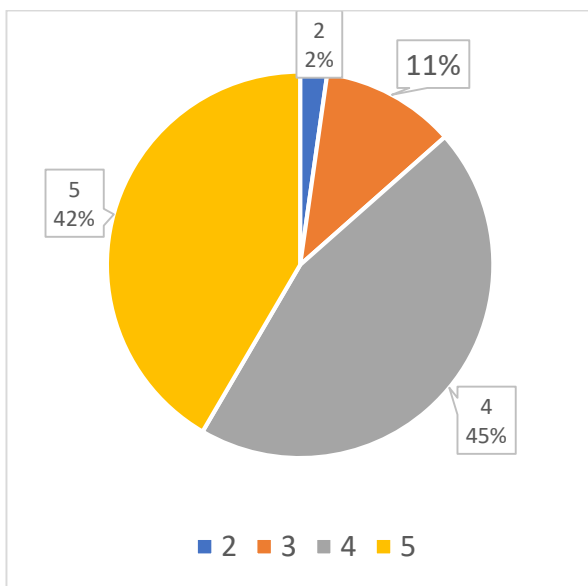


Ratings	Q5-The Syllabus is relevant to the present day situation / researchers.
1	2
2	2
3	18
4	30
5	37
<b>Grand Total</b>	<b>89</b>

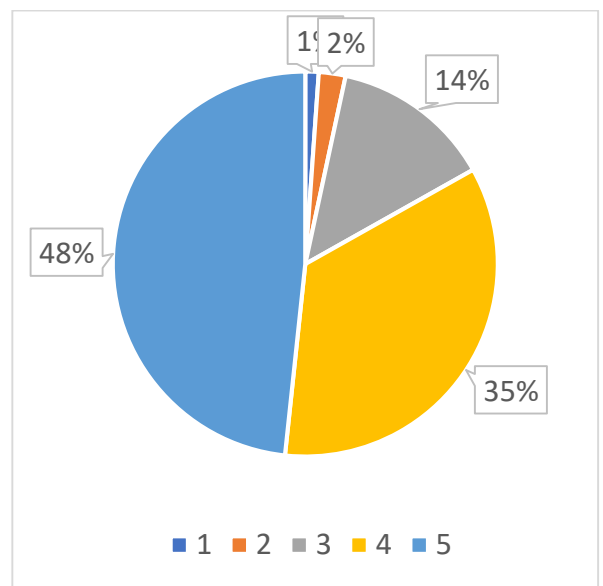
Ratings	Q6-The Syllabus is adequate to foster Entrepreneurship and encourage higher studies.
1	2
2	9
3	14
4	38
5	26
<b>Grand Total</b>	<b>89</b>



Ratings	Q7-Relevance of the Syllabus with Employability.
2	2
3	10
4	40
5	37
<b>Grand Total</b>	<b>89</b>

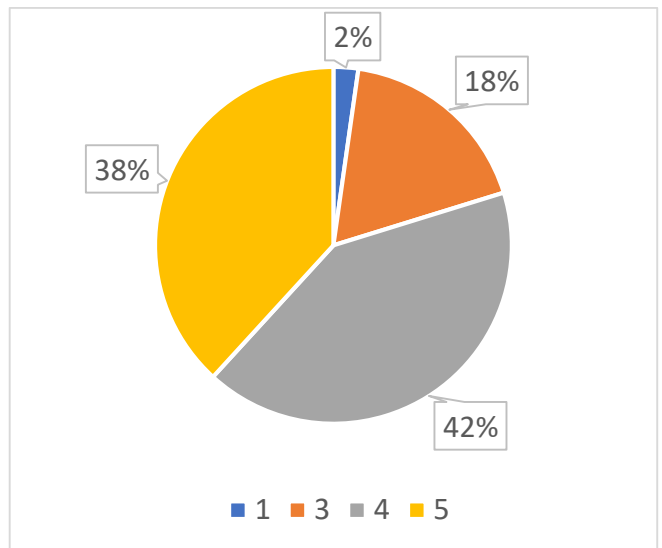
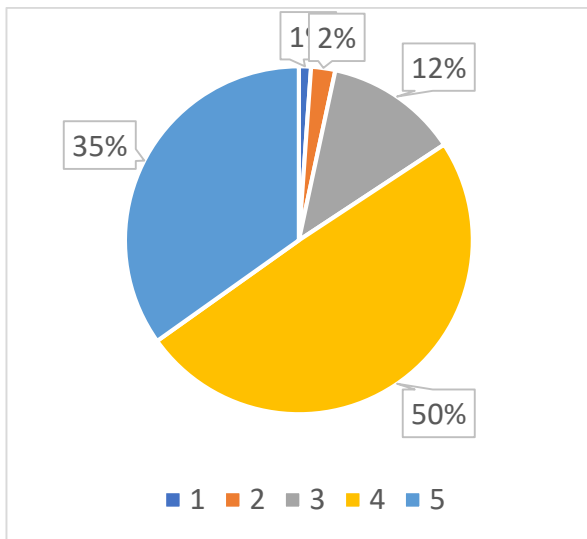


Ratings	Q8-Syllabus expose to new knowledge and practices
1	1
2	2
3	12
4	31
5	43
<b>Grand Total</b>	<b>89</b>



Ratings	Q9-The Syllabus is well structured and rigorous.
1	1
2	2
3	11
4	44
5	31
<b>Grand Total</b>	<b>89</b>

Ratings	Q10-The Syllabus is relevant and adequate in terms of scope, depth and choice to help develop the required competencies amongst students.
1	2
3	16
4	37
5	34
<b>Grand Total</b>	<b>89</b>

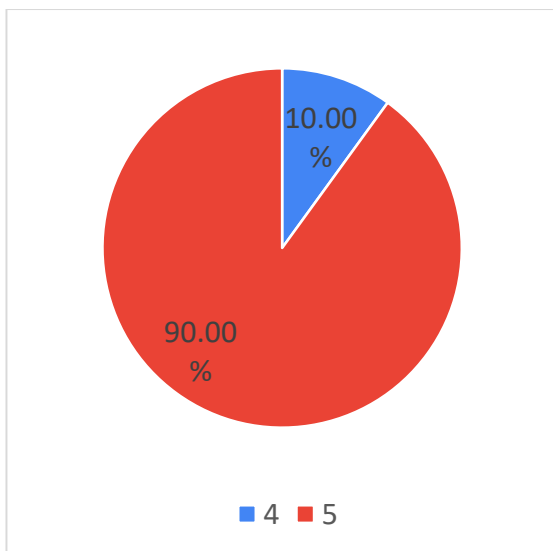


*[Handwritten signature]*

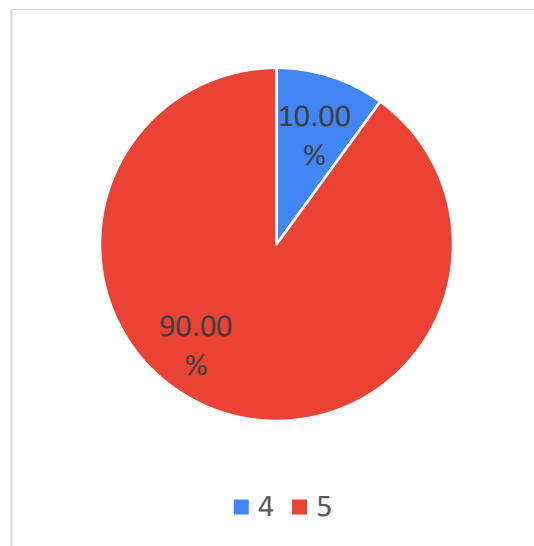


## (b) Faculty (SPM)

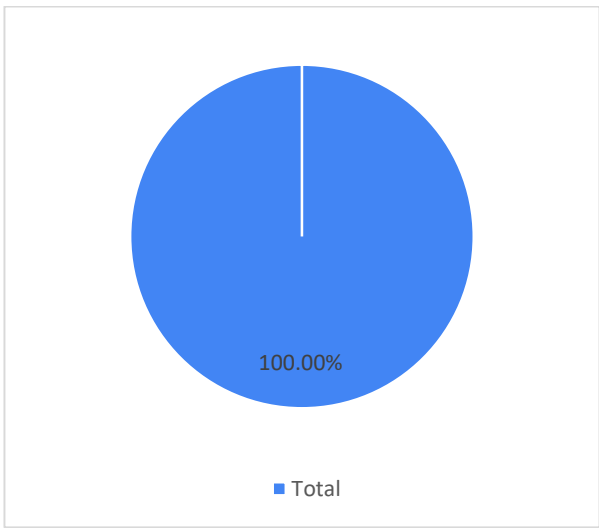
Ratings	Q1Rate the quality and relevance of the syllabus of the Courses
4	1
5	9
Grand Total	10



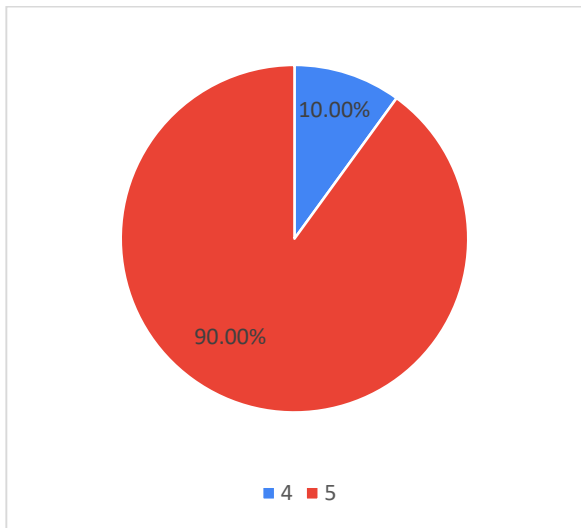
Ratings	Q2-The contents of the Syllabus are in relation to the technological advancements
4	1
5	9
Grand Total	10



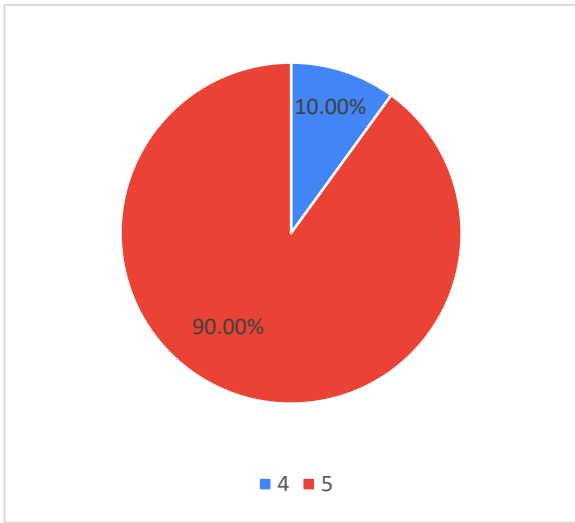
Ratings	Q3-The Syllabus are well organized in terms of teaching hours, content flow, coverage, activities, assessment, access to learning materials, etc.
4	0
5	10
<b>Grand Total</b>	<b>10</b>



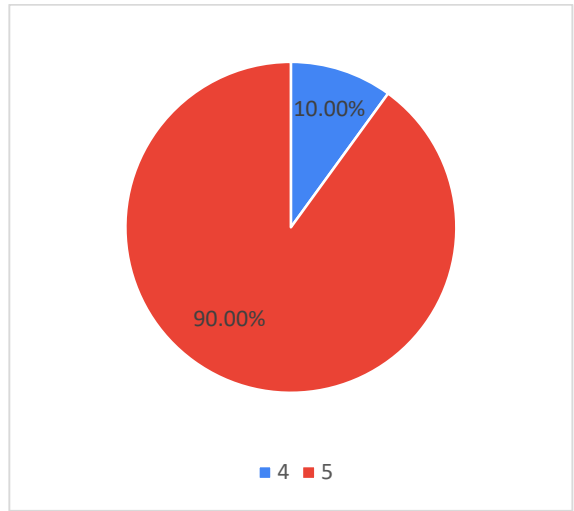
Ratings	Q4-Relevance of the Syllabus with the Industry / Society / Economy / Environment.
4	1
5	9
<b>Grand Total</b>	<b>10</b>



Ratings	Q5-The Syllabus is need based and covered the fundamentals as well as advanced topics.
4	1
5	9
Grand Total	10



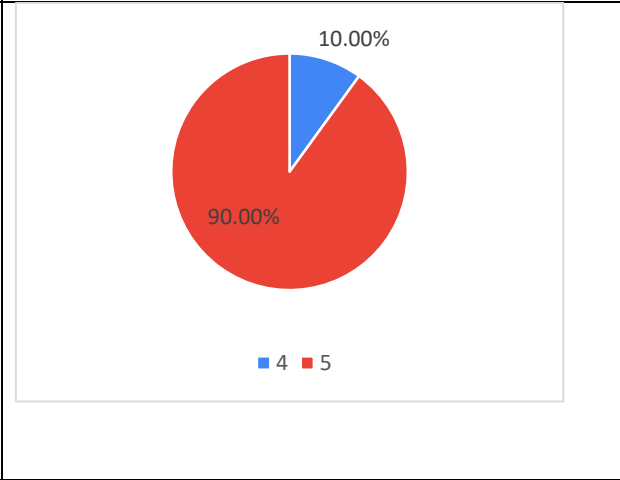
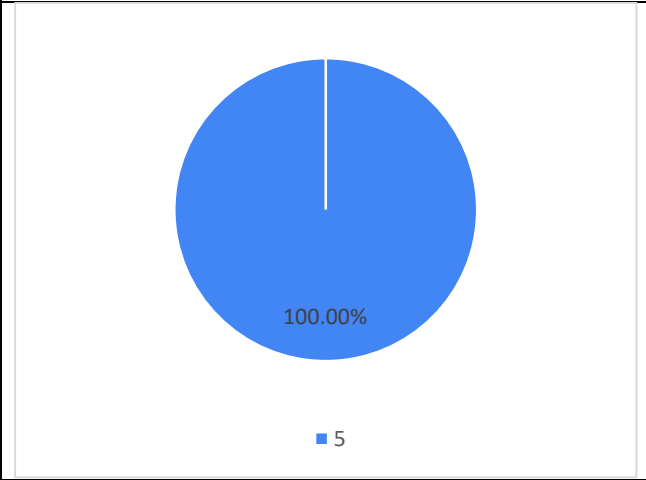
Ratings	Q6-Relavance of the Syllabus with Employability.
4	1
5	9
Grand Total	10



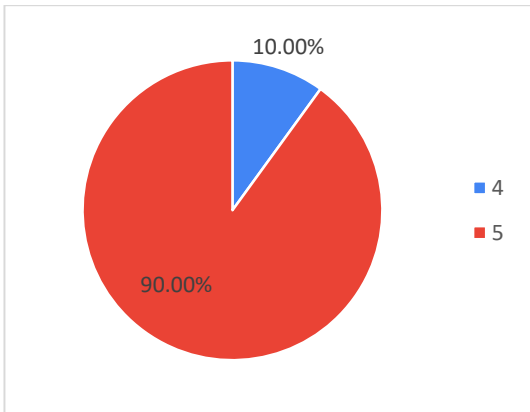


Ratings		Q7-Course objectives and Outcomes of the Course are well defined in the Syllabus.
4		0
5		10
Grand Total		10

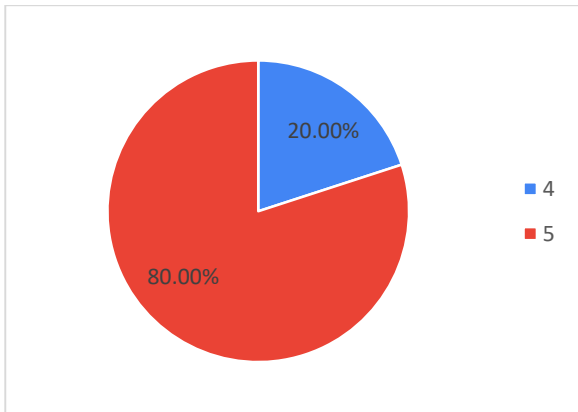
Ratings		Q8-The Syllabus is relevant and adequate in terms of scope, depth and choice to help develop the required competencies amongst students.
4		1
5		9
Grand Total		10



Q9-Faculty feedback have been considered in framing the Syllabus.	
Ratings	
4	1
5	9
<b>Grand Total</b>	<b>10</b>



Q10-Study material is easily available in pursuing the Syllabus.	
Ratings	
4	2
5	8
<b>Grand Total</b>	<b>10</b>



*[Handwritten signature]*

